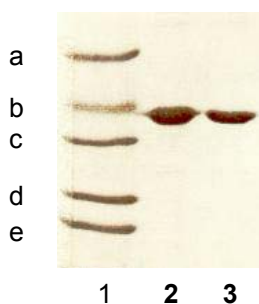




Standard Cardiac-Actin

Description	Cardiac-Actin
Molecular Weight	43,000
Source	Bovine heart
Purity	> 98% (determined by SDS gelelectrophoresis)
Application	Protein standard in 1D and 2D SDS gelelectrophoresis Immunoassays Immunization
Isoelectric Point	pI 5.4
Storage	At 2-8°C (lyoph.); at -20°C (reconstituted)
Reconstitution	Reconstitute with 0.1 mL dist. water; after reconstitution solution contains 10 mM Tris/acetate buffer pH 8.0, 0.2mM CaCl ₂ , 0.2 mM ATP, 1 mM DTT, 0.5% SDS. Protein concentration: <1 mg/ml recommended to obtain sufficient solubilization
Quantity	100 µg (lyoph.)

Lane 1: BSA (a)
ovalbumin (b)
pepsin (c)
trypsinogen (d)
β-lactoglobulin (e)
Lane 2,3: **cardiac actin**



Reference:

Spudich J A and Watt S: The regulation of rabbit skeletal muscle contraction. J. Biol. Chem. 246, 4866 pp. (1971).

FOR RESEARCH USE ONLY.

Cat. No.

62224