

Product datasheet

anti-Actin Related Protein T1 guinea pig polyclonal, serum

Short overview

Cat. No.	GP-SH6
Quantity	100 µl

Product description

Host	Guinea pig
Antibody Type	Polyclonal
Immunogen	Synthetic N-terminal domain (aa 2-14: FNPHALDVPAVIF-C) of human Arp-T1 protein, coupled to KLH
Formulation	Contains 0.09% sodium azide and 0.5% BSA
UniprotID	G3N284 (Bovine), Q8TDG2 (Human)
Synonym	Actin-related protein T1, ARP-T1, ACTRT1, ARPT1, HSD27
Note	Centrifuge prior to opening
Conjugate	Unconjugated
Purification	Stabilized antiserum
Storage	Short term at 2-8°C; long term storage in aliquots at -20°C; avoid freeze/thaw cycles
Intended use	Research use only
Application	IHC, WB
Reactivity	Bovine, Human

Applications

Immunohistochemistry (IHC) - frozen	1:100
Western Blot (WB)	1:2,000

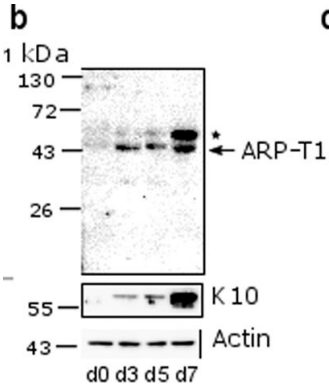
Background

Specific for actin related protein T1 (MW 41,696; pI 6.32, calculated from sequence data; Mr 40,000 on SDS-PAGE).

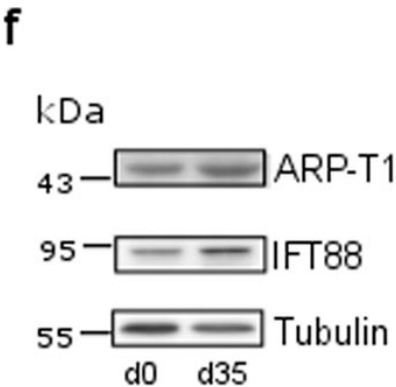
Product images



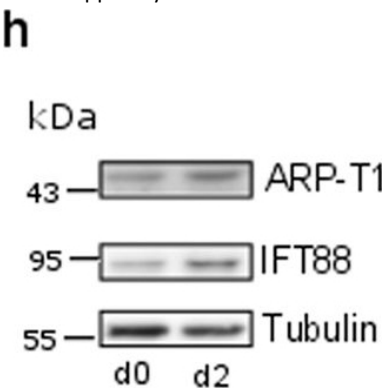
anti-Actin Related Protein T1 guinea pig polyclonal, serum



[Park, H. S., Papanastasi, E., et al. ARP-T1-associated Bazex-DuprÃ©-Christol syndrome is an inherited basal cell cancer with ciliary defects characteristic of ciliopathies. Commun Biol. 2021-05-10.](#) Species/Reactant: Homo sapiens (Human) Applications: Western Blotting Image collected and cropped by CiteAb from the following publication, provided under a CC-BY licence.



[Park, H. S., Papanastasi, E., et al. ARP-T1-associated Bazex-DuprÃ©-Christol syndrome is an inherited basal cell cancer with ciliary defects characteristic of ciliopathies. Commun Biol. 2021-05-10.](#) Species/Reactant: Homo sapiens (Human) Applications: Western Blotting Image collected and cropped by CiteAb from the following publication, provided under a CC-BY licence.



[Park, H. S., Papanastasi, E., et al. ARP-T1-associated Bazex-DuprÃ©-Christol syndrome is an inherited basal cell cancer with ciliary defects characteristic of ciliopathies. Commun Biol. 2021-05-10.](#) Species/Reactant: Homo sapiens (Human) Applications: Western Blotting Image collected and cropped by CiteAb from the following publication, provided under a CC-BY licence.

References

Publication	Species	Application
Park, H. S. et al. ARP-T1-associated Bazexâ€“DuprÃ©â€“Christol syndrome is an inherited basal cell cancer with ciliary defects characteristic of ciliopathies. Commun. Biol. 4, (2021).	human	WB
Heid, H. Novel Actin-Related Proteins Arp-T1 and Arp-T2 as Components of the Cytoskeletal Calyx of the Mammalian Sperm Head. Exp. Cell Res. 279, 177-187 (2002).	bovine	WB,ICC-IF