

Product datasheet

anti-CD74 mouse monoclonal, LN-2, purified

Short overview

Cat. No.	691707
Quantity	1 ml (100 µg/ml)
Concentration	100 µg/ml

Product description

Host	Mouse
Antibody Type	Monoclonal
Isotype	IgG1 kappa
Clone	LN-2
Immunogen	Cell extracts from diffuse histiocytic lymphoma SU-DHL-4
Formulation	PBS with 0.02% sodium azide
UniprotID	P04233 (Human), P04441 (Mouse)
Synonym	HLA class II histocompatibility antigen gamma chain, HLA-DR antigens-associated invariant chain, Ia antigen-associated invariant chain, Ii, p33, CD antigen CD74 [Cleaved into: Class-II-associated invariant chain peptide, CLIP], CD74, DHLAG
Conjugate	Unconjugated
Purification	Affinity chromatography
Storage	2-8°C
Intended use	Research use only
Application	FACS, ICC/IF, IHC
Reactivity	Human, Monkey, Mouse
No reactivity	Rat

Applications

Flow Cytometry (FACS)	0.5-1.0 µg/million cells in 0.1 ml
Immunocytochemistry (ICC)	1:100-1:200 (0.5-1.0 µg/ml)
Immunohistochemistry (IHC) - frozen	1:50-1:100 (1-2 µg/ml)
Immunohistochemistry (IHC) - paraffin	1:50-1:100 (1-2 µg/ml; microwave treatment in 10 mM citrate buffer pH 6.0 recommended)

Background

LN-2 is directed against the CD74 cluster, established during the IVth Leukocyte Typing Workshops. CD74 comprises four species of proteins (MW 41/35/33 kDa), all coded by a single gene, consisting of nine exons. CD74 is expressed primarily by antigen presenting cells, such as B-lymphocytes (from before the pre-B cell stage to before the plasma cell stage), macrophages, and monocytes, and many epithelial cells. In tissue sections anti CD74 show a binding pattern very similar to that of anti-HLA-DR. It binds to the peptide binding groove of newly synthesized MHC class II alpha/beta heterodimers and prevents their premature association with endogenous polypeptides.

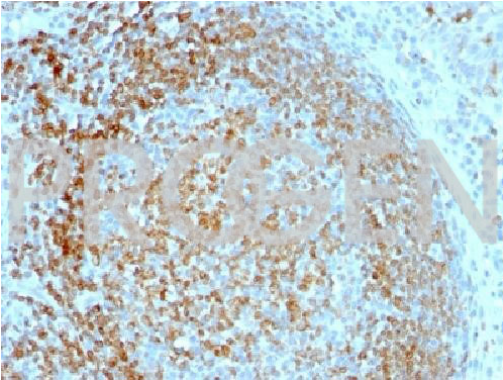
PROGEN Biotechnik GmbH | Maaßstraße 30 | D-69123 Heidelberg

Tel.: +49 (0) 6221 8278-0 | Fax: +49 (0) 6221 8278-24 | Email: info@progen.com | Web: www.progen.com

2024 March 29 / Version: 691707/DS-230420ibg | Page 1

Positive control: Daudi or Raji cells. Tonsil or lymph node.

Product images



Human tonsil