

## Product datasheet

### protag-HiRes anti-TagFP-X1 Alexa 647

#### Short overview

<b>Cat. No.</b>	83112L
<b>Quantity</b>	200 µl

#### Product description

<b>Host</b>	Llama/alpaca
<b>Antibody Type</b>	Recombinant, produced in E.coli
<b>Isotype</b>	Single-domain antibody
<b>Clone</b>	1H7
<b>Immunogen</b>	TagFP
<b>Formulation</b>	5 µM fluorescently labeled single-domain antibody in buffered saline, 50% glycerol, 0.09% sodium azide
<b>Note</b>	Centrifuge prior to opening
<b>Conjugate</b>	Alexa 647
<b>Purification</b>	Affinity chromatography
<b>Storage</b>	Up to 3 months: -20°C; up to 12 months: -80°C or below; protect from light!
<b>Intended use</b>	Research use only
<b>Application</b>	ICC/IF
<b>Reactivity</b>	mKate/mKate2, mTagBFP, mTagRFP, mTagRFP657
<b>No reactivity</b>	Dendra2, Dronpa, tdEOS, mEOS3.2, mRuby3, mTFP, GFP, dsRed or their most common derivatives

#### Applications

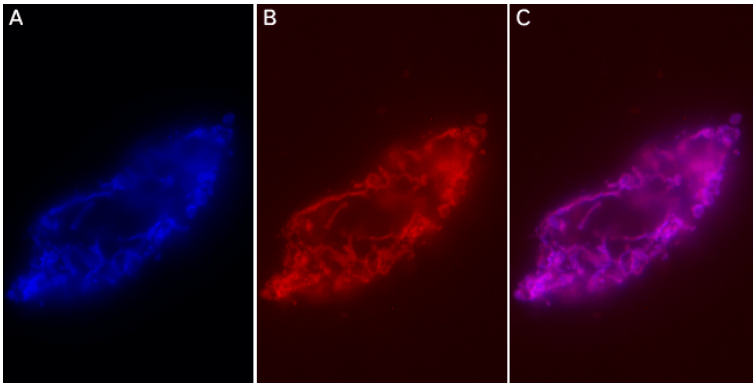
<b>Immunocytochemistry (ICC)</b>	1:500
----------------------------------	-------

#### Background

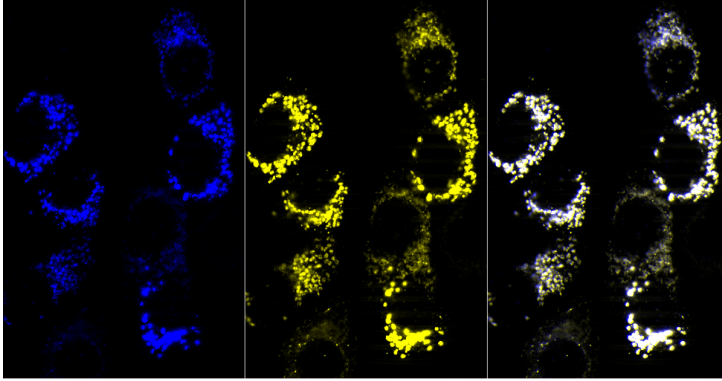
protag-HiRes anti-TagFP camelid single-domain antibody (sdAb) produced by NanoTag Biotechnologies GmbH. It recognizes fluorescent proteins derived from Entacmaea quadricolor, such as mTagBFP, mTagRFP, mTagRFP657, mKate and mKate2 with high affinity and specificity.

In protag-HiRes anti-TagFP-X1, each fluorophore is coupled to exactly one single-domain antibody, which in turn binds to its target molecule in a monovalent fashion. The high binding affinity and a high coupling efficiency of > 95% guarantees a highly linear relation between target molecule number and fluorescent intensity. This enables you to directly count your target molecule of interest. The fluorophore is located exceptionally close to the recognized epitope (< 1.5 nm), which is ideal for all microscopy techniques.

#### Product images



protag-HiRes anti-TagFP-X1 Alexa 647



Immunostaining of PFA fixed 3T3 cells expressing a TOM70-BFP reporter protein with protag-HiRes anti-TagFP-X1 Abberior Star 635P (dilution 1:500, the BFP signal is represented in blue, the corresponding protag-HiRes signal is represented in yellow and the merge of both channels is represented in white)(courtesy of NanoTag Biotechnologies GmbH).