

Product datasheet

anti-CD138 mouse monoclonal, IHC138, purified

Short overview

Cat. No.	691746
Quantity	1 ml

Product description

Host	Mouse
Antibody Type	Monoclonal
Isotype	IgG1 kappa
Clone	IHC138
Immunogen	Recombinant Human CD138
Formulation	Tris pH 7.3-7.7 with 1% BSA and 0.09% sodium azide
UniprotID	P18827 (Human)
Synonym	Syndecan-1, SYND1, CD antigen CD138, SDC1, SDC
Conjugate	Unconjugated
Purification	Affinity chromatography
Storage	2-8°C
Intended use	Research use only
Application	IHC
Reactivity	Human

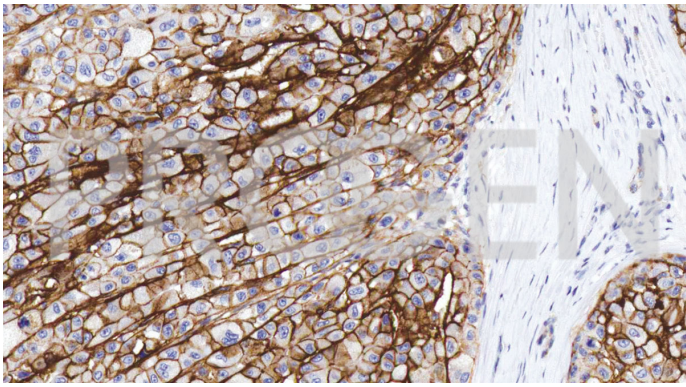
Applications

Immunohistochemistry (IHC) - paraffin	1:50-1:200 (microwave treatment recommended)
--	--

Background

Cluster of Differentiation 138 (CD138), also known as Syndecan-1, is a transmembrane glycoprotein present on the surface of B-cells during late stage differentiation. Anti-CD138 is used to differentiate marginal zone lymphoma from lymphoplasmacytic lymphoma. ALK+ Large B-Cell Lymphoma (LBCL) commonly stains positively for CD138, but not for CD20 and CD79a. Anti-CD138 reacts positively with HHV8-associated primary effusion lymphoma that lacks B-cell markers. CD138 is also a useful marker for identifying and enumerating benign, reactive, or malignant plasma cells from the bone marrow biopsy samples.

Product images



Liver cancer