

## Product datasheet

### anti-Keratin K1 guinea pig polyclonal, serum

#### Short overview

<b>Cat. No.</b>	GP-K1
<b>Quantity</b>	100 µl

#### Product description

<b>Host</b>	Guinea pig
<b>Antibody Type</b>	Polyclonal
<b>Immunogen</b>	Synthetic peptide (SAGIINYQRRTTSS - C) of human keratin K1 (formerly also designated cytokeratin 1), coupled to KLH
<b>Formulation</b>	Contains 0.09% sodium azide and 0.5% BSA
<b>UniprotID</b>	P04264 (Human), Q99PS0 (Mouse)
<b>Synonym</b>	Keratin, type II cytoskeletal 1, 67 kDa cytokeratin, Cytokeratin-1, CK-1, Hair alpha protein, Keratin-1, K1, Type-II keratin Kb1, KRT1, KRTA
<b>Note</b>	Centrifuge prior to opening
<b>Conjugate</b>	Unconjugated
<b>Purification</b>	Stabilized antiserum
<b>Storage</b>	Short term at 2-8°C; long term storage in aliquots at -20°C; avoid freeze/thaw cycles
<b>Intended use</b>	Research use only
<b>Application</b>	ICC/IF, IHC, WB
<b>Reactivity</b>	Human, Mouse

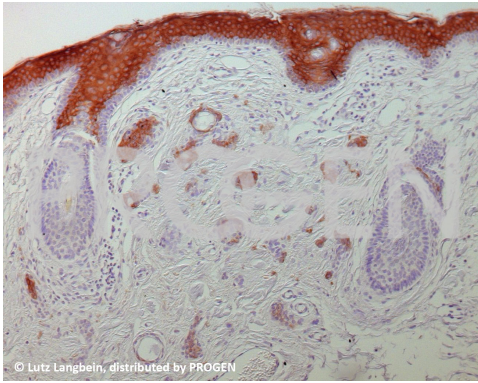
#### Applications

<b>Immunocytochemistry (ICC)</b>	Assay dependent
<b>Immunohistochemistry (IHC) - frozen</b>	1:200
<b>Immunohistochemistry (IHC) - paraffin</b>	1:100 (microwave treatment recommended)
<b>Western Blot (WB)</b>	1:3,000

#### Background

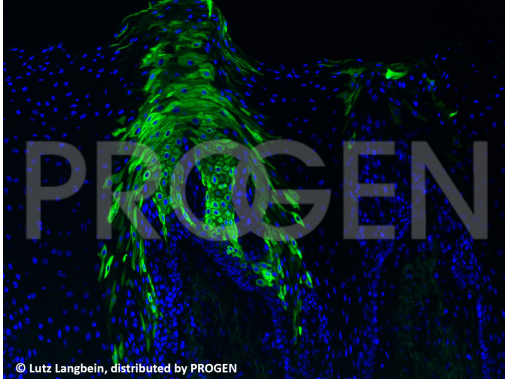
Specific for keratin K1 in suprabasal layers of cornified squamous epithelia, e.g. the suprabasal layer of scalp and foot sole. Negative with non-keratinizing stratified and non-stratified epithelia (e.g. esophagus, duodenum)! Polypeptide reacting: basic human keratin K1 (Mr 66,000). Positive control: human foot sole.

#### Product images



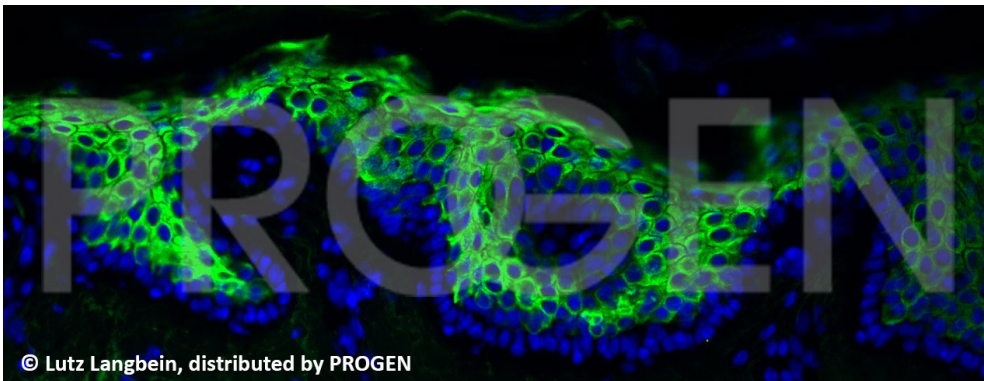
© Lutz Langbein, distributed by PROGEN

Human scalp syringoma (courtesy of L. Langbein)



© Lutz Langbein, distributed by PROGEN

Human tongue papille



© Lutz Langbein, distributed by PROGEN

Human back skin (courtesy of L. Langbein)

## References

Publication	Species	Application
<a href="#">Langbein, L. et al. New facets of keratin K77: Interspecies variations of expression and different intracellular location in embryonic and adult skin of humans and mice. Cell Tissue Res. 354, 793â€“812 (2013).</a>	mouse	IHC (frozen)