

Product datasheet

anti-Keratin K7 guinea pig polyclonal, serum

Short overview

| | |
|-----------------|--------|
| Cat. No. | GP-K7 |
| Quantity | 100 µl |

Product description

| | |
|----------------------|---|
| Host | Guinea pig |
| Antibody Type | Polyclonal |
| Immunogen | Synthetic peptide (C-SAGPGLLKAYSIRT) of human keratin K7 (formerly also designated cytokeratin 7), coupled to KLH |
| Formulation | Contains 0.09% sodium azide and 0.5% BSA |
| UniprotID | P08729 (Human) |
| Synonym | Keratin, type II cytoskeletal 7, Cytokeratin-7, CK-7, Keratin-7, K7, Sarcolectin, Type-II keratin Kb7, KRT7, SCL |
| Note | Centrifuge prior to opening |
| Conjugate | Unconjugated |
| Purification | Stabilized antiserum |
| Storage | Short term at 2-8°C; long term storage in aliquots at -20°C; avoid freeze/thaw cycles |
| Intended use | Research use only |
| Application | ICC/IF, IHC, WB |
| Reactivity | Human |

Applications

| | |
|--|---|
| Immunocytochemistry (ICC) | Assay dependent |
| Immunohistochemistry (IHC) - frozen | 1:200 |
| Immunohistochemistry (IHC) - paraffin | 1:100 (microwave treatment recommended) |
| Western Blot (WB) | 1:3,000 |

Background

Excellent marker for the discrimination of specific subtypes of adenocarcinoma: e.g. adenocarcinoma of pancreas, bile duct carcinoma and transitional carcinoma of bladder are stained, whereas hepatocellular and prostate carcinomas are negative.

Detects specific subtypes of adenocarcinomas: adenocarcinoma of pancreas, gallbladder, lung, cervix; cholangio carcinoma of liver; ductal and lobular carcinoma of breast; carcinomas of ovary; transitional cell carcinoma of bladder; mesothelioma; negative with most cases of hepatocellular carcinoma. In colorectal carcinoma early stages are reported to be negative, but advanced stages of tumor development are positive for keratin K7 expression.

Reactive polypeptide (specificity): basic human keratin K7 (Mr 54,000).

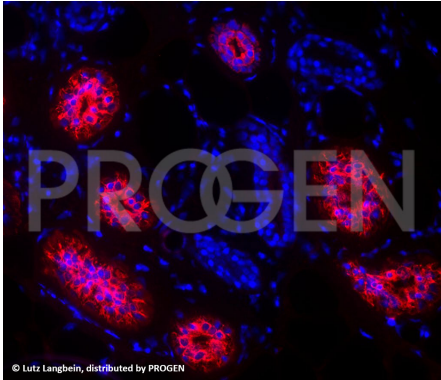
PROGEN Biotechnik GmbH | Maaßstraße 30 | D-69123 Heidelberg

Tel.: +49 (0) 6221 8278-0 | Fax: +49 (0) 6221 8278-24 | Email: info@progen.com | Web: www.progen.com

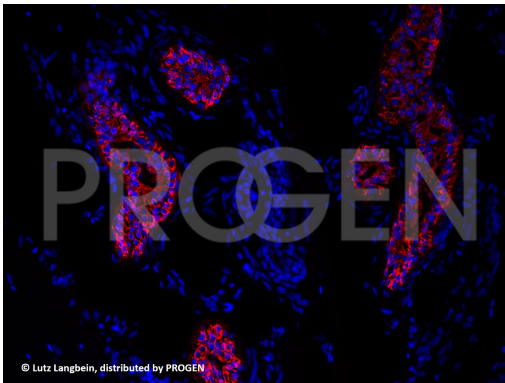
2024 April 26 / Version: GP-K7/DS-230420ibg | Page 1

Positive control: glandular epithelia (e.g. sweat glands, sebaceous glands); Merkel cells.

Product images



Human sole sweat gland (courtesy of L. Langbein)



Human sole sweat gland (courtesy of L. Langbein)

References

| Publication | Species | Application |
|--|---------|--------------|
| Langbein, L., Yoshida, H., Praetzel-Wunder, S., Parry, D. A. & Schweizer, J. The Keratins of the Human Beard Hair Medulla: The Riddle in the Middle. J. Invest. Dermatol. 130, 55â€“73 (2010). | human | IHC (frozen) |