

Product datasheet

anti-Progesterone Receptor mouse monoclonal, 1A6, supernatant

Short overview

Cat. No.	16077
Quantity	1 ml

Product description

Host	Mouse
Antibody Type	Monoclonal
Isotype	IgG1
Clone	1A6
Immunogen	Synthetic peptide
Formulation	Contains 0.09% sodium azide
UniprotID	Q8IZF4 (Human)
Synonym	Adhesion G-protein coupled receptor G5, G-protein coupled receptor 114, G-protein coupled receptor PGR27, ADGRG5, GPR114, PGR27, UNQ2524/PRO6017
Note	Centrifuge prior to opening
Conjugate	Unconjugated
Purification	Hybridoma cell culture supernatant
Storage	Short term at 2-8°C; long term storage in aliquots at -20°C; avoid freeze/thaw cycles
Intended use	Research use only
Application	ICC/IF, IHC
Reactivity	Human

Applications

Immunocytochemistry (ICC)	Assay dependent
Immunohistochemistry (IHC) - frozen	1:5-1:10
Immunohistochemistry (IHC) - paraffin	1:5-1:10 (microwave treatment recommended)

Background

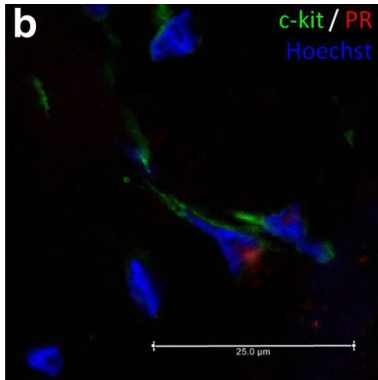
The antibody specifically stains tumor cell nuclei, no cytoplasmic staining. The antibody is directed against an epitope at the C-terminal part of the human progesterone receptor (A/B region). The level of progesterone and estrogen receptor protein content in breast cancer tissue is an important parameter for prognosis and treatment.

Positive control: Human breast carcinoma.

Product images



anti-Progesterone Receptor mouse monoclonal, 1A6, supernatant



[Domino, M., Pawlinski, B., et al. Uterine EMG activity in the non-pregnant sow during estrous cycle. BMC Vet Res. 2018-06-05.](#) Species/Reactant: *Sus scrofa domesticus* (Domestic pig) Applications: Immunohistochemistry-paraffin-immunofluorescence Image collected and cropped by CiteAb from the following publication, provided under a CC-BY licence.

References

Publication	Species	Application
Domino, M. et al. Uterine EMG activity in the non-pregnant sow during estrous cycle. BMC.Vet.Res. 14, 176 (2018).	pig	IHC-IF (paraffin)