

Product datasheet

anti-Perilipin 5 mouse monoclonal, MLDP-130.336, supernatant

Short overview

Cat. No.	651176
Quantity	5 ml

Product description

Host	Mouse
Antibody Type	Monoclonal
Isotype	IgG1
Clone	MLDP-130.336
Immunogen	Recombinant peptide (aa 1-463), purified from E. coli
Formulation	Contains 0.09% sodium azide
UniprotID	Q00G26 (Human)
Synonym	Perilipin-5, Lipid storage droplet protein 5, PLIN5, LSDP5, OXPAT, PAT-1
Conjugate	Unconjugated
Purification	Hybridoma cell culture supernatant
Storage	Short term at 2-8°C; long term storage in aliquots at -20°C; avoid freeze/thaw cycles
Intended use	Research use only
Application	IEM, IHC, WB
Reactivity	Human

Applications

Cell-based Assay	Assay dependent
Immunohistochemistry (IHC) - frozen	Ready-to-use
Immunohistochemistry (IHC) - paraffin	Ready-to-use (microwave treatment recommended)
Western Blot (WB)	1:10

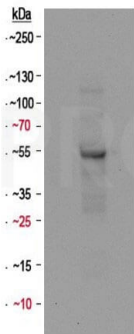
Background

Polypeptide reacting: MLDP = myocardial lipid droplet protein (also described as OXPAT/PAT-1 and perilipin 5 / PLIN5), MW 50,844 (calculated from aa sequence data); apparent Mr 52,000 (after SDS-PAGE). MLDP / PLIN5 pertains to the PLIN/PAT-family proteins, covering the surface of cytoplasmic lipid droplets and sharing a homologous domain called PAT. Additional PLIN/PAT proteins include adipophilin (ADRP/PLIN2), perilipin (PLIN1), and TIP47 (PLIN3) which are expressed in differentiation-related stages of lipid metabolism. MLDP / PLIN5 is positively detected in heart and skeletal muscle.

Reactivity on cultured cell lines: Caco-2, PLC

Product images

human heart lysate



Primary antibody:
anti-Perilipin 5
(Cat. No. 651176)
1:10

Secondary antibody:
anti-mouse HRP
(Cat. No. 90002)
1:2500

© PROGEN

WB with anti-Perilipin 5 antibody (Cat. No. 651176, 1:10), human heart lysate