

## Product datasheet

anti-Cyclin D1 mouse monoclonal, DCS-6, liquid, purified, sample

### Short overview

<b>Cat. No.</b>	690053S
<b>Quantity</b>	200 µl (100 µg/ml)
<b>Concentration</b>	100 µg/ml (20 µg)

### Product description

<b>Host</b>	Mouse
<b>Antibody Type</b>	Monoclonal
<b>Isotype</b>	IgG2a
<b>Clone</b>	DCS-6
<b>Immunogen</b>	Human recombinant full-length cyclin D1 protein
<b>Formulation</b>	0.09% sodium azide, 0.5% BSA in PBS buffer, pH 7.4
<b>UniprotID</b>	Q64HP0 (Dog, Canis familiaris),P24385 (Human),P25322 (Mouse),P39948 (Rat)
<b>Synonym</b>	G1/S-specific cyclin-D1, B-cell lymphoma 1 protein, BCL-1, BCL-1 oncogene, PRAD1 oncogene, CCND1, BCL1, PRAD1
<b>Conjugate</b>	Unconjugated
<b>Purification</b>	Affinity chromatography
<b>Storage</b>	Short term at 2-8°C; long term storage in aliquots at -20°C; avoid freeze/thaw cycles
<b>Intended use</b>	Research use only
<b>Application</b>	ICC/IF, IHC, WB
<b>Reactivity</b>	Dog, Human, Monkey, Mouse, Rat

### Applications

<b>Immunocytochemistry (ICC)</b>	Assay dependent
<b>Immunohistochemistry (IHC) - frozen</b>	1:20-1:50 (2-5 µg/ml)
<b>Immunohistochemistry (IHC) - paraffin</b>	1:20-1:50 (2-5 µg/ml, microwave treatment recommended)
<b>Western Blot (WB)</b>	1:50-1:100 (1-2 µg/ml)

### Background

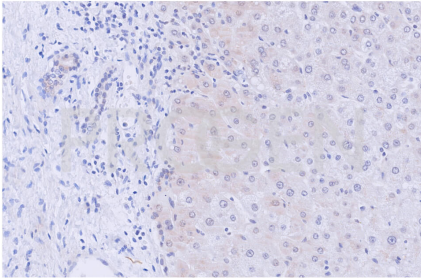
DCS-6 reacts specifically with cyclin D1 protein present predominantly in G1 phase of cell cycle; it does not cross-react with D2 or D3 cyclins (the closest relatives within the cyclin family); DCS-6 is especially useful in tumor diagnosis: it can be used as fast method to identify cases with 11q13 amplifications. Cyclin D1 gene is identical to the BCL-1 and the PRAD-1 oncogene and is part of the chromosome 11q13 amplicon which is amplified in several common tumor types like breast, lung, esophagus, urinary bladder and head and neck carcinoma. Polypeptide reacting: Mr 36 kDa polypeptide (cyclin D1 polypeptide of human cells). Reactivity on cultured cell lines: MCF-7, MDA-MB-134 and MDA-MB-231 (breast cancer cell lines), UMSC22 (squamous cell carcinoma cell line), U-2-OS (osteosarcoma cell line), RT-112, A431, HT-29, 3T3-L1, Ins-1. The expression of Cyclin D1 is tissue specific and associated with tumor onset and progression.

PROGEN Biotechnik GmbH | Maaßstraße 30 | D-69123 Heidelberg

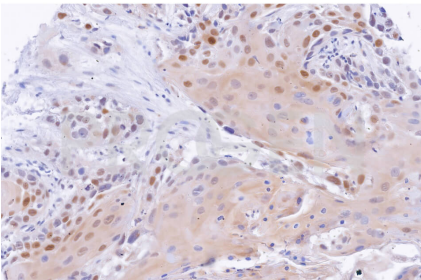
Tel.: +49 (0) 6221 8278-0 | Fax: +49 (0) 6221 8278-24 | Email: [info@progen.com](mailto:info@progen.com) | Web: [www.progen.com](http://www.progen.com)

2024 April 25 / Version: 690053S/DS-200122lim | Page 1

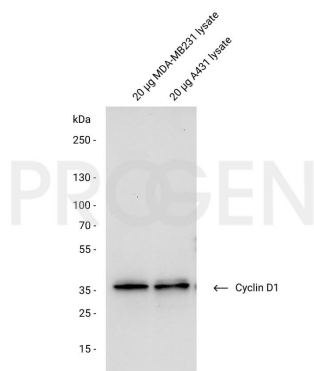
## Product images



IHC analysis of human liver using anti-Cyclin D1. IHC was performed on formalin fixed paraffin embedded sections. The samples were deparaffinized with xylol and ethanol followed by heat induced antigen retrieval with 10 mM citrate buffer. After preparation the tissue was blocked with normal serum for 20 min at RT. The primary antibody anti-Cyclin D1 mouse monoclonal, DCS-6 (Cat. No. 690053) was diluted in PBS (antibody concentration 2 µg/ml) and incubated at 4°C over-night. The secondary antibody ImmPRESS HRP anti-mouse IgG was incubated for 20 min at RT. Slides were incubated with DAB solution until a brown staining is visible and with Haemalaun for a few minutes. The 20x picture was acquired using microscopy (courtesy of J. Hess, University Hospital Heidelberg).



IHC analysis of head and neck squamous cell carcinoma using anti-Cyclin D1. IHC was performed on formalin fixed paraffin embedded sections. The samples were deparaffinized with xylol and ethanol followed by heat induced antigen retrieval with 10 mM citrate buffer. After preparation the tissue was blocked with normal serum for 20 min at RT. The primary antibody anti-Cyclin D1 mouse monoclonal, DCS-6 (Cat. No. 690053) was diluted in PBS (antibody concentration 2 µg/ml) and incubated at 4°C over-night. The secondary antibody ImmPRESS HRP anti-mouse IgG was incubated for 20 min at RT. Slides were incubated with DAB solution until a brown staining is visible and with Haemalaun for a few minutes. The 20x picture was acquired using microscopy (courtesy of J.Hess, University Hospital Heidelberg).



Western blot analysis of mouse human MDA-MB231 and A431 cell lysate with anti-Cyclin D1 antibody. Western blot analysis was performed on 20 µg of either MDA-MB231 or A431 lysate. Cells were lysed with RIPA buffer. The PVDF membrane was blocked with 5% dry milk in PBST (PBS + 0.1% Tween 20) for 1 h at RT. The primary antibody anti-Cyclin D1 mouse monoclonal, DCS-6 (Cat. No. 690053) was diluted in blocking buffer (antibody concentration 1 µg/ml) and incubated for 1 h at RT. The secondary antibody anti-mouse IgG goat polyclonal, HRP conjugate was also diluted in blocking buffer (antibody concentration 0.2 µg/ml) and incubated for 1 h at RT. The bands were visualized by chemiluminescent detection using Pierce™ ECL Western Blotting Substrate.

## References

Publication	Species	Application
<a href="#">Lukas, J. et al. DNA tumor virus oncoproteins and retinoblastoma gene mutations share the ability to relieve the cell's requirement for cyclin D1 function in G1. J. Cell Biol. 125, 625â€“638 (1994).</a>	human,monkey	WB,ICC-IF
<a href="#">Bartkova, J., Lukas, J., Strauss, M. &amp; Bartek, J. Cell cycle-related variation and tissue-restricted expression of human cyclin D1 protein. J. Pathol. 172, 237â€“245 (1994).</a>	human	WB,IHC (frozen),ICC-IF
<a href="#">Bartkova, J. et al. Cyclin D1 protein expression and function in human breast cancer. Int. J. Cancer 57, 353â€“361 (1994).</a>	human	WB,IHC (paraffin),ICC-IF
<a href="#">Gillett, C. et al. Amplification and Overexpression of Cyclin D1 in Breast Cancer Detected by Immunohistochemical Staining. Cancer Res. 54, 1812â€“1817 (1994).</a>	human	IHC (paraffin)
<a href="#">Muller, H. et al. Cyclin D1 expression is regulated by the retinoblastoma protein. Proc. Natl. Acad. Sci. 91, 2945â€“2949 (1994).</a>	human	WB,ICC-IF