

Product datasheet

anti-CD38 mouse monoclonal, FS02, purified

Short overview

Cat. No.	691579
Quantity	1 ml (100 µg/ml)
Concentration	100 µg/ml

Product description

Host	Mouse
Antibody Type	Monoclonal
Isotype	IgG1 kappa
Clone	FS02
Immunogen	Human T-cell line CCRF-CEM
Formulation	PBS with 0.02% sodium azide
UniprotID	P28907 (Human)
Synonym	ADP-ribosyl cyclase/cyclic ADP-ribose hydrolase 1, EC 3.2.2.6, 2'-phospho-ADP-ribosyl cyclase, 2'-phospho-ADP-ribosyl cyclase/2'-phospho-cyclic-ADP-ribose transferase, EC 2.4.99.20, 2'-phospho-cyclic-ADP-ribose transferase, ADP-ribosyl cyclase 1, ADPRC 1, Cyclic ADP-ribose hydrolase 1, cADPr hydrolase 1, T10, CD antigen CD38, CD38
Conjugate	Unconjugated
Purification	Affinity chromatography
Storage	2-8°C
Intended use	Research use only
Application	FACS, ICC/IF, IHC
Reactivity	Human

Applications

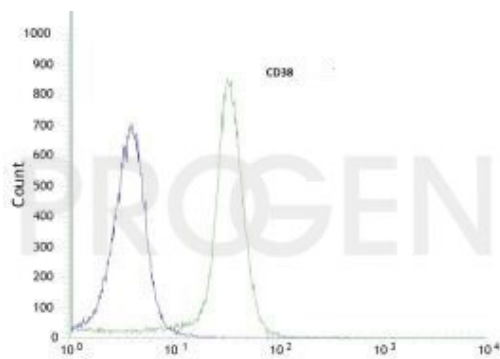
Flow Cytometry (FACS)	0.5-1.0 µg/million cells in 0.1 ml
Immunocytochemistry (ICC)	1:100-1:200 (0.5-1 µg/ml)
Immunohistochemistry (IHC) - frozen	1:25-1:50 (2-4 µg/ml)

Background

FS02 reacts with a 45 kDa glycopeptide which is a type II membrane glycoprotein with a transmembrane sequence near the NH2 terminus, involved in the regulation of lymphocyte adhesion to endothelial cells. Its ligand is CD31. CD38 is found on early cells of B and T lineages and on activated T and B-cells. It is not found on most mature resting peripheral lymphocytes. Also positive are thymus cells and Ig secreting plasma cells. The CD34+ + CD38- population of hematopoietic stems cells defines the most pluripotent cells (e.g. blast colony forming cells).

Positive control: CCRF-CEM cells, tonsil, spleen or skin.

Product images



FACS with human HeLa cells