

## Product datasheet

### anti-Keratin K17 mouse monoclonal, Ks17.E3, lyophilized, purified

#### Short overview

<b>Cat. No.</b>	61036
<b>Quantity</b>	50 µg
<b>Concentration</b>	50 µg/ml after reconstitution with 1 ml dist. water

#### Product description

<b>Host</b>	Mouse
<b>Antibody Type</b>	Monoclonal
<b>Isotype</b>	IgG2b
<b>Clone</b>	Ks17.E3
<b>Immunogen</b>	Human keratin K17 of 46 kDa
<b>Formulation</b>	Lyophilized; reconstitute in 1 ml dist. water (final solution contains 0.09% sodium azide, 0.5% BSA in PBS buffer, pH 7.4)
<b>UniprotID</b>	Q04695 (Human), Q6IFU8 (Rat)
<b>Synonym</b>	Keratin, type I cytoskeletal 17, 39.1, Cytokeratin-17, CK-17, Keratin-17, K17, KRT17
<b>Conjugate</b>	Unconjugated
<b>Purification</b>	Affinity chromatography
<b>Storage before reconstitution</b>	2-8°C until indicated expiry date
<b>Storage after reconstitution</b>	Up to 3 months at 2-8°C; long term storage in aliquots at -20°C; avoid freeze/thaw cycles
<b>Intended use</b>	Research use only
<b>Application</b>	IHC, WB
<b>Reactivity</b>	Human, Rat

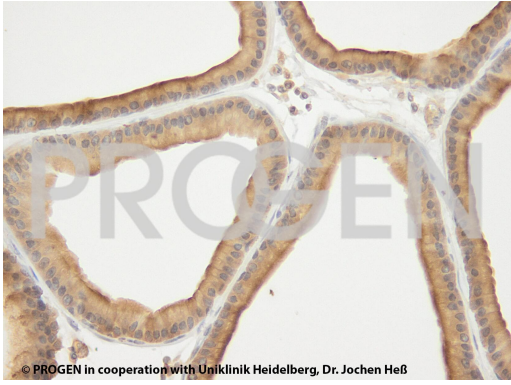
#### Applications

<b>Immunohistochemistry (IHC) - frozen</b>	1:10-1:50
<b>Immunohistochemistry (IHC) - paraffin</b>	1:10-1:50 (microwave treatment recommended)
<b>Western Blot (WB)</b>	1:100 (0.5 µg/ml)

#### Background

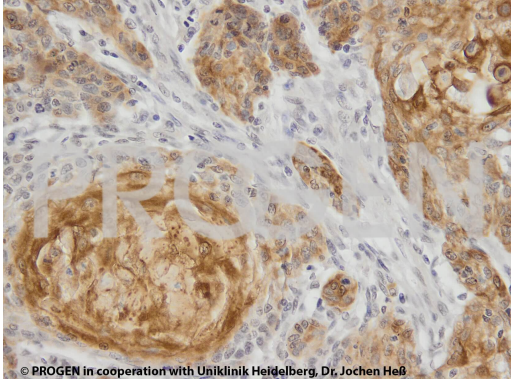
Ks 17.E3 represents an excellent marker to distinguish myoepithelial cells (positive for K17) from luminal epithelium of various glands (mammary, sweat, salivary, bronchial, tracheal, laryngeal, esophageal) and benign from malignant forms of e.g. mammary gland tumors. In the epidermis suprabasal staining is found only in cornifying regions and in the outer root sheath of hair follicles. Tested reactivity on cultured cell lines: HeLa, A-431. Tumors specifically detected: benign tumors of mammary gland; most malignant forms of mammary tumors are negative for keratin K17.

#### Product images



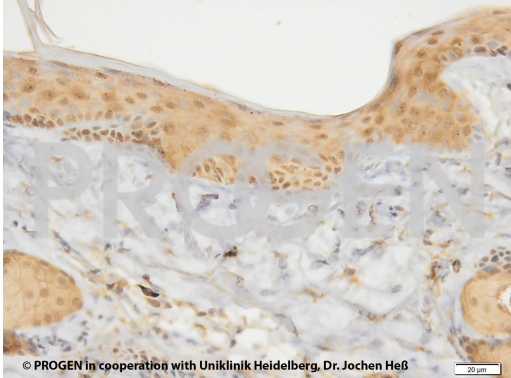
© PROGEN in cooperation with Uniklinik Heidelberg, Dr. Jochen Heß

IHC of rat bladder (courtesy of J.Heß, University Hospital Heidelberg)



© PROGEN in cooperation with Uniklinik Heidelberg, Dr. Jochen Heß

IHC of human HNSCC (courtesy of J.Heß, University Hospital Heidelberg)



© PROGEN in cooperation with Uniklinik Heidelberg, Dr. Jochen Heß

IHC of mouse tail (courtesy of J.Heß, University Hospital Heidelberg)

## References

Publication	Species	Application
<a href="#">Katagata, Y., Yamazaki, S. &amp; Uchiumi, A., Hsp40 regulates the amount of keratin proteins via ubiquitin-proteasome pathway in cultured human cells., Int J Mol Med 29, 165-8, (2012)</a>		
<a href="#">Langbein, L., Yoshida, H., Praetzel-Wunder, S., Parry, D. A. &amp; Schweizer, J. The Keratins of the Human Beard Hair Medulla: The Riddle in the Middle. J. Invest. Dermatol. 130, 55â€“73 (2010).</a>	human	IHC (frozen)
<a href="#">Iwatsuki, H. &amp; Suda, M., Keratin 20 expressed in the endocrine and exocrine cells of the rabbit duodenum., Acta Histochem Cytochem 40, 123-30, (2007)</a>	rabbit	IHC-P
<a href="#">Langbein, L. et al. Characterization of a Novel Human Type II Epithelial Keratin K1b, Specifically Expressed in Eccrine Sweat Glands. J. Invest. Dermatol. 125, 428â€“444 (2005).</a>	human	IHC (frozen)
<a href="#">Moll, I. et al. Human Merkel cells--aspects of cell biology, distribution and functions. Eur. J. Cell Biol. 84, 259â€“71 (2005).</a>	human	IHC (paraffin)