

## Product datasheet

### protag-HiRes anti-GFP-X4 AF568

#### Short overview

<b>Cat. No.</b>	81411L
<b>Quantity</b>	200 µl

#### Product description

<b>Host</b>	Llama/alpaca
<b>Antibody Type</b>	Recombinant, produced in E.coli
<b>Isotype</b>	Single-domain antibody
<b>Clone</b>	1H1/1B2
<b>Immunogen</b>	GFP
<b>Formulation</b>	1.25 µM of each fluorescently labeled single-domain antibody clone in buffered saline, 50% glycerol, 0.09% sodium azide. 5 µM total fluorophore concentration
<b>Note</b>	Centrifuge prior to opening
<b>Conjugate</b>	AF568
<b>Purification</b>	Affinity chromatography
<b>Storage</b>	Up to 3 months: -20°C; up to 12 months: -80°C or below; protect from light!
<b>Intended use</b>	Research use only
<b>Application</b>	ICC/IF
<b>Reactivity</b>	Cerulean, Citrine, EGFP, Emerald GFP, GFP, Sirius, Superecliptic pHluorin, Superfold GFP, acGFP, eCFP, eYFP, mEGFP (A206K), mEGFP (L221K), mTurquoise 1/2, mVenus, paGFP, tSapphire
<b>No reactivity</b>	Dendra2, Dronpa, tdEOS, mEOS3.2, mRuby3, mTFP, mCherry, mRFP, dsRed, mTagBFP or their most common derivatives

#### Applications

<b>Immunocytochemistry (ICC)</b>	1:500
----------------------------------	-------

#### Background

protag-HiRes anti-GFP is a blend of two camelid single-domain antibody (sdAb) produced by NanoTag Biotechnologies GmbH. It recognizes GFP and its most common derivatives with high affinity and specificity. It recognizes Sirius, tSapphire, Cerulean, eCFP, mTurquoise 1/2, acGFP, GFP, EGFP, Emerald GFP, mEGFP (A206K), mEGFP (L221K), superecliptic pHluorin, paGFP, superfolder GFP, eYFP, mVenus, Citrine.

In protag-HiRes anti-GFP-X4, two fluorophore molecules are site-specifically coupled to each individual single-domain antibody. The blend of two camelid single-domain antibodies therefore simultaneously targets up to four fluorophores to the protein of interest, which ensures extra-bright signals. Owing to the small size of our protag single-domain antibodies, the distance between the target epitope and each fluorophore is below 4 nm. In comparison to conventional detection systems using conventional antibodies, our protag-HiRes anti-GFP-X4 can thus improve the localization accuracy by 10-15 nm. Both features - superior brightness and precise fluorophore placement - render our protag-HiRes anti-GFP-X4

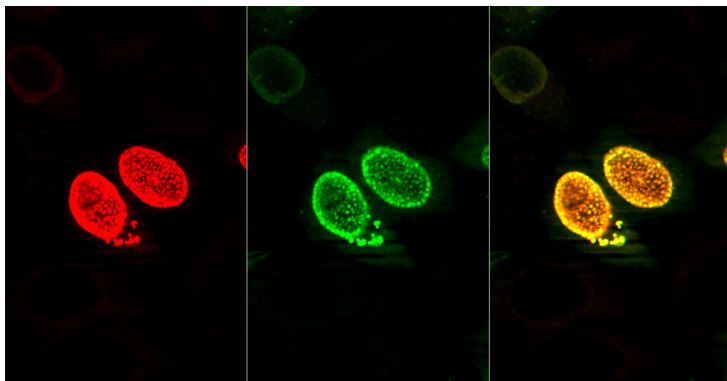
PROGEN Biotechnik GmbH | Maaßstraße 30 | D-69123 Heidelberg

Tel.: +49 (0) 6221 8278-0 | Fax: +49 (0) 6221 8278-24 | Email: [info@progen.com](mailto:info@progen.com) | Web: [www.progen.com](http://www.progen.com)

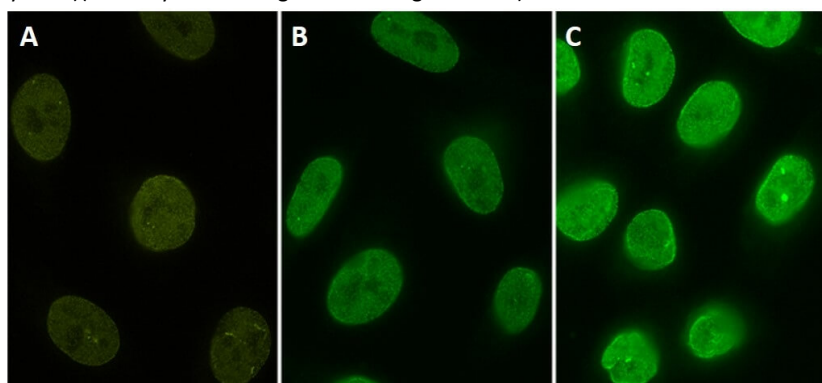
2024 April 27 / Version: 81411L/DS-141221ibg | Page 1

products excellent tools for all microscopy techniques.

## Product images



Indirect immunostaining of PFA fixed HeLa cells expressing Nup98-GFP with protag-HiRes anti-GFP-X4 Atto 565 (dilution 1:500, the GFP signal is represented in green, the corresponding protag-HiRes signal is represented in red and the merge of both channels is represented in yellow)(courtesy of NanoTag Biotechnologies GmbH).



protag-HiRes anti-GFP-X4 AF568