

Product datasheet

anti-CD1b mouse monoclonal, 100-1A5, purified

Short overview

Cat. No.	691549
Quantity	1 ml (100 µg/ml)
Concentration	100 µg/ml

Product description

Host	Mouse
Antibody Type	Monoclonal
Isotype	IgM kappa
Clone	100-1A5
Immunogen	Human leucocytes
Formulation	PBS with 0.02% sodium azide
UniprotID	P29016 (Human)
Synonym	T-cell surface glycoprotein CD1b, CD antigen CD1b, CD1B
Conjugate	Unconjugated
Purification	Affinity chromatography
Storage	2-8°C
Intended use	Research use only
Application	ELISA, FACS, ICC/IF, IHC
Reactivity	Human

Applications

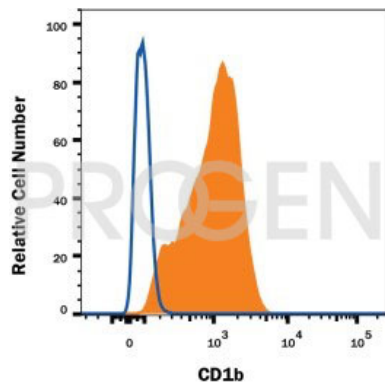
ELISA	Assay dependent
Flow Cytometry (FACS)	0.5-1.0 µg/million cells in 0.1 ml
Immunocytochemistry (ICC)	1:100-1:200 (0.5-1.0 µg/ml)
Immunohistochemistry (IHC) - frozen	1:50-1:100 (1-2 µg/ml)

Background

100-1A5 reacts with CD1b, a 44 kDa type 1 glycoprotein associated with beta2-microglobulin. It is expressed on dendritic cells, Langerhans cells, thymocytes and T acute lymphoblastic leukemia cells. CD1, type 1 membrane protein, has structural similarity to the MHC class 1 molecule and has been shown to present lipid antigens for recognition by T lymphocytes. CD1b is also expressed in Langerhans interdigitating cells. 100-1A5 also reacts with pyramidal cells in the brain and was typed at the IVth International CD Workshop.

Positive control: Molt-4 cells, human thymus.

Product images



Human PBMC's