

Product datasheet

anti-CD63 mouse monoclonal, EBS-CD-036, purified

Short overview

Cat. No.	691599
Quantity	1 ml (100 µg/ml)
Concentration	100 µg/ml

Product description

Host	Mouse
Antibody Type	Monoclonal
Isotype	IgG1 kappa
Clone	EBS-CD-036
Immunogen	MeWo cell membranes
Formulation	PBS with 0.02% sodium azide
UniprotID	P08962 (Human), P41731 (Mouse)
Synonym	CD63 antigen, Granulophysin, Lysosomal-associated membrane protein 3, LAMP-3, Melanoma-associated antigen ME491, OMA81H, Ocular melanoma-associated antigen, Tetraspanin-30, Tspan-30, CD antigen CD63, CD63, MLA1, TSPAN30
Conjugate	Unconjugated
Purification	Affinity chromatography
Storage	2-8°C
Intended use	Research use only
Application	FACS, ICC/IF, IHC
Reactivity	Human, Mouse

Applications

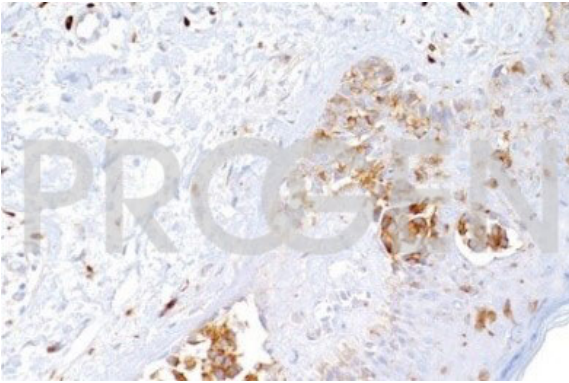
Flow Cytometry (FACS)	0.5-1.0 µg/million cells in 0.1 ml
Immunocytochemistry (ICC)	1:100-1:200 (0.5-1.0 µg/ml)
Immunohistochemistry (IHC) - frozen	1:100-1:200 (0.5-1.0 µg/ml)
Immunohistochemistry (IHC) - paraffin	1:100-1:200 (0.5-1.0 µg/ml)

Background

EBS-CD-036 reacts with CD63 and is mainly used in combination with EBS-CD-147 and/or anti-PEM (MUC1) to identify melanoma from carcinoma in paraffin sections. Melanomas are EBS-CD-036 and EBS-CD-147 positive, but PEM negative. EBS-CD-036 reacts in frozen sections with melanoma and breast cancers, smooth muscle and lung (weakly). In paraffin sections melanomas (primary skin, uveal and choroidal), melanoma metastases, clear cell CA, carcinoids, skin nevi, medullary CA of thyroid, prostate CA, some breast, ovary, lung, colorectal and bladder CA positive. Normal tissues that are positive include: mast cells, sweat glands, islets of Langerhans, pituitary, pancreas, peribronchial glands, Paneth cells and prostate glands.

Positive control: SK-MEL-28, HL60, THP-1, NIH/3T3 cells, melanoma, lymphoma.

Product images



Melanoma (skin)