

## Product datasheet

### anti-Cyclin D3 mouse monoclonal, DCS-22, lyophilized, purified

#### Short overview

<b>Cat. No.</b>	61064
<b>Quantity</b>	50 µg
<b>Concentration</b>	50 µg/ml after reconstitution with 1 ml dist. water

#### Product description

<b>Host</b>	Mouse
<b>Antibody Type</b>	Monoclonal
<b>Isotype</b>	IgG1
<b>Clone</b>	DCS-22
<b>Immunogen</b>	Human recombinant cyclin D3 protein
<b>Formulation</b>	Lyophilized; reconstitute in 1 ml dist. water (final solution contains 0.09% sodium azide, 0.5% BSA in PBS buffer, pH 7.4)
<b>Conjugate</b>	Unconjugated
<b>Purification</b>	Affinity chromatography
<b>Storage before reconstitution</b>	2-8°C until indicated expiry date
<b>Storage after reconstitution</b>	Up to 3 months at 2-8°C; long term storage in aliquots at -20°C; avoid freeze/thaw cycles
<b>Intended use</b>	Research use only
<b>Application</b>	IHC, WB
<b>Reactivity</b>	Human, Monkey, Mouse

#### Applications

<b>Immunohistochemistry (IHC) - frozen</b>	1:20-1:50
<b>Immunohistochemistry (IHC) - paraffin</b>	1:20-1:50 (microwave treatment recommended)
<b>Western Blot (WB)</b>	Assay dependent

#### Background

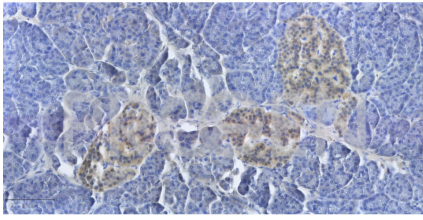
DCS-22 reacts specifically with cyclin D3.

The antibody is useful for analysis of proliferation, detection of cyclin D3 on tissue sections (suspected oncogene) and in cell cycle studies.

The antibody does not cross-react with cyclin D1 and cyclin D2.

Complementary reaction to the anti-cyclin D1/D2 antibodies.

#### Product images



IHC analysis of human endocrine epithelial cells of the islets of Langerhans of the pancreas using anti-Cyclin D3 antibody (Cat. No. 61064). IHC was performed on formalin fixed paraffin embedded sections. The samples were deparaffinized with xylol and ethanol followed by heat induced antigen retrieval with 10 mM citrate buffer. After preparation the tissue was blocked with normal serum for 20 min at RT. The primary antibody anti-Cyclin D3 (Cat. No. 61064) was diluted in PBS (antibody concentration 2.5 µg/ml) and incubated at 4°C over-night. The secondary antibody ImmPRESS HRP anti-mouse IgG was incubated for 20 min at RT. Slides were incubated with DAB solution until a brown staining is visible and with Haemalaun for a few minutes. The 10x picture was acquired using microscopy (courtesy of J.Hess, University Hospital Heidelberg).



anti-Cyclin D3 mouse monoclonal, DCS-22, lyophilized, purified

## References

Publication	Species	Application
<a href="#">Bartkova, J., Zemanova, M. &amp; Bartek, J. Abundance and subcellular localisation of cyclin D3 in human tumours. Int. J. cancer 65, 323â€“7 (1996).</a>	human	WB,ICC-IF