

## Product datasheet

### anti-Keratin K3 guinea pig polyclonal, serum

#### Short overview

<b>Cat. No.</b>	GP-K3
<b>Quantity</b>	100 µl

#### Product description

<b>Host</b>	Guinea pig
<b>Antibody Type</b>	Polyclonal
<b>Immunogen</b>	Synthetic peptide of human keratin K3 (formerly also designated cytokeratin 3; C-IKF SQS SQS SQR YSR), coupled to KLH
<b>Formulation</b>	Contains 0.09% sodium azide and 0.5% BSA
<b>UniprotID</b>	P12035 (Human)
<b>Synonym</b>	Keratin, type II cytoskeletal 3, 65 kDa cytokeratin, Cytokeratin-3, CK-3, Keratin-3, K3, Type-II keratin Kb3, KRT3
<b>Note</b>	Centrifuge prior to opening
<b>Conjugate</b>	Unconjugated
<b>Purification</b>	Stabilized antiserum
<b>Storage</b>	Short term at 2-8°C; long term storage in aliquots at -20°C; avoid freeze/thaw cycles
<b>Intended use</b>	Research use only
<b>Application</b>	IHC
<b>Reactivity</b>	Human, Mouse

#### Applications

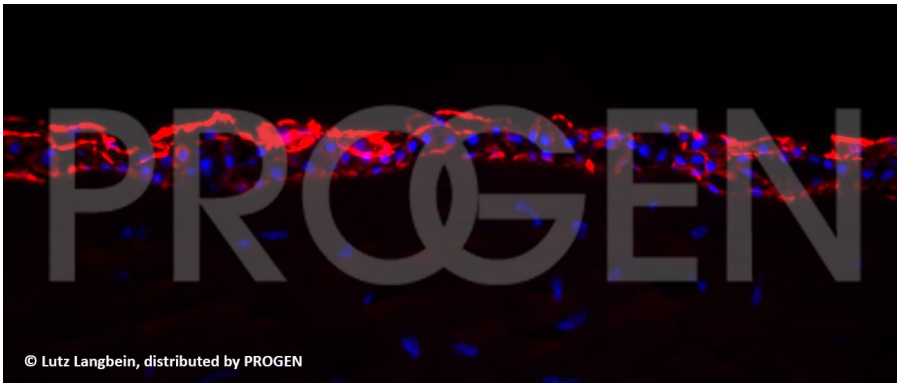
<b>Immunohistochemistry (IHC) - frozen</b>	1:100-1:200
--	-------------

#### Background

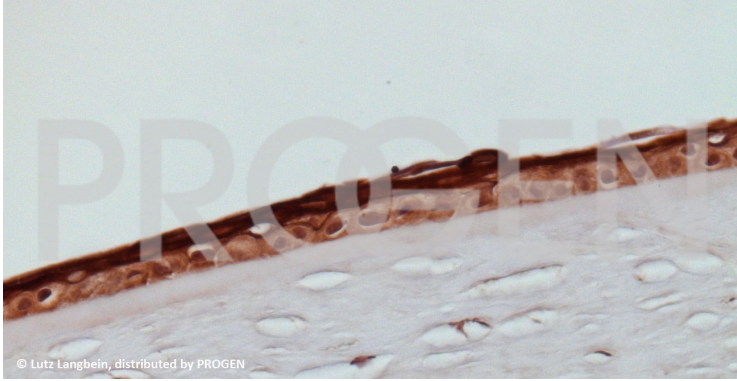
MW 63,000 intermediate filament polypeptide, keratin K3, detected by immunohistochemistry in the cornea only. Useful as a marker for corneal type differentiation (positive for epithelial cells of cornea) and for studying corneal epithelial stem cells.

Positive control: human cornea.

#### Product images



Human cornea (courtesy of L. Langbein)



Human cornea (courtesy of L. Langbein)