

Product datasheet

anti-Keratin K12 guinea pig polyclonal, serum

Short overview

Cat. No.	GP-K12
Quantity	100 µl

Product description

Host	Guinea pig
Antibody Type	Polyclonal
Immunogen	Synthetic peptide of human keratin K12 (formerly also designated cytokeratin 12; DLS NNT MSL SVR T-C), coupled to KLH
Formulation	Contains 0.09% sodium azide and 0.5% BSA
UniprotID	Q99456 (Human), Q64291 (Mouse)
Synonym	Keratin, type I cytoskeletal 12, Cytokeratin-12, CK-12, Keratin-12, K12, KRT12
Note	Centrifuge prior to opening
Conjugate	Unconjugated
Purification	Stabilized antiserum
Storage	Short term at 2-8°C; long term storage in aliquots at -20°C; avoid freeze/thaw cycles
Intended use	Research use only
Application	IHC
Reactivity	Human, Mouse, Pig

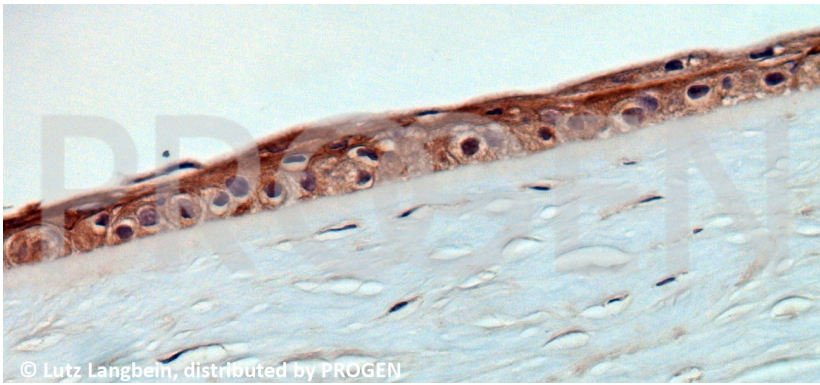
Applications

Immunohistochemistry (IHC) - frozen	1:100-1:200
Immunohistochemistry (IHC) - paraffin	1:100-1:200 (microwave treatment recommended)

Background

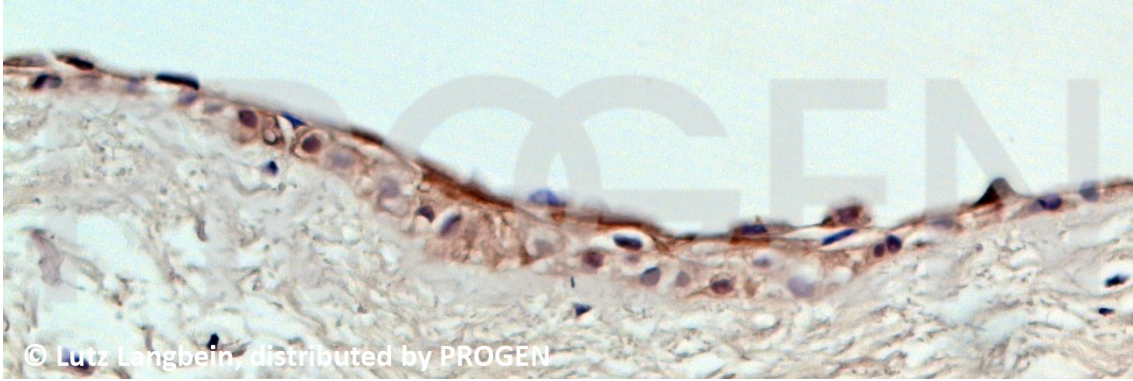
Useful as a marker for corneal type differentiation (positive for epithelial cells of cornea) and for studying corneal epithelial stem cells. Reactive polypeptide: MW 55,000 (pI 4.9) intermediate filament polypeptide, keratin K12, detected by immunohistochemistry in the cornea only. Useful as a marker for corneal type differentiation (positive for epithelial cells of cornea) and for studying corneal epithelial stem cells. Positive control: human cornea.

Product images



© Lutz Langbein, distributed by PROGEN

Human cornea (courtesy of L. Langbein)



© Lutz Langbein, distributed by PROGEN

Human cornea (courtesy of L. Langbein)

References

Publication	Species	Application
Ehrlich, F. et al. Comparative genomics suggests loss of keratin K24 in three evolutionary lineages of mammals. Sci.Rep. 9, 10924 (2019)	human	IHC-IF (paraffin), IHC-IF (frozen)