

Product datasheet

protag-HiSec anti-mouse IgG2a/b-X2 AF568

Short overview

Cat. No.	80511
Quantity	500 µl

Product description

Host	Llama/alpaca
Antibody Type	Recombinant, produced in E.coli
Isotype	Single-domain antibody
Clone	14A4
Immunogen	Mouse IgG2
Formulation	5 µM fluorescently labeled single-domain antibody in buffered saline, 50% glycerol, 0.09% sodium azide (10 µM fluorophore)
Note	Centrifuge prior to opening
Conjugate	AF568
Purification	Affinity chromatography
Storage	Up to 3 months: -20°C; up to 12 months: -80°C or below; protect from light!
Intended use	Research use only
Application	ICC/IF, WB
Reactivity	Mouse IgG2 and IgG2b
No reactivity	Chicken IgG, Donkey IgG, Goat IgG, Guinea pig IgG, Human IgG, Mouse IgG1 and IgM, Rabbit IgG, Rat IgG

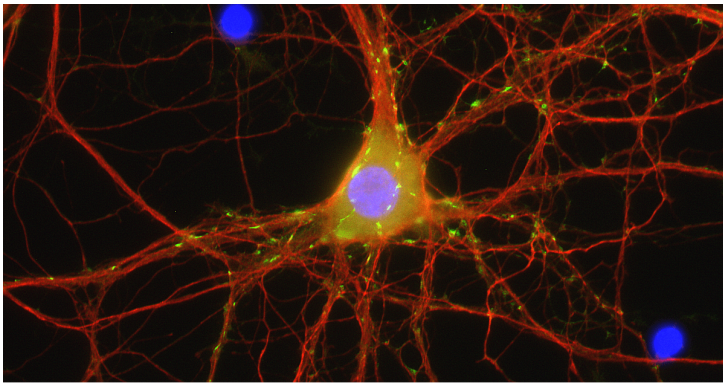
Applications

Immunocytochemistry (ICC)	1:500
Western Blot (WB)	1:500

Background

protag-HiSec anti-mouse IgG2a/b is an isotype- and species-specific camelid single-domain antibody (sdAb) produced by NanoTag Biotechnologies GmbH. It is directed against mouse IgG2a and IgG2b and contains two site-specifically coupled fluorophores per protag molecule. One single-domain antibody targets two fluorophores to a primary mouse antibody. Due to the monovalent binding, there are no primary and secondary antibody clusters formed, leading to better epitope accessibility and a more precise localization. There are no batch-to-batch variations, since the protag-HiSecs single-domain antibodies are recombinantly expressed.

Product images



Multiplexing: Indirect immunostaining of PFA fixed mouse hippocampus neurons with an anti-Tau primary antibody detected with protag-HiSec anti-mouse IgG2a/b-X2 Atto 565 (represented in red) and an anti-Synaptoporin primary antibody detected with protag-HiSec anti-mouse IgG2a/b-X2 Atto 488 (Cat. No. 80505, represented in green). Nuclei were visualized by DAPI staining (blue)(courtesy of NanoTag Biotechnologies GmbH).