

## Product datasheet

### anti-CD48 mouse monoclonal, 156-4H9, purified

#### Short overview

<b>Cat. No.</b>	691590
<b>Quantity</b>	1 ml (100 µg/ml)
<b>Concentration</b>	100 µg/ml

#### Product description

<b>Host</b>	Mouse
<b>Antibody Type</b>	Monoclonal
<b>Isotype</b>	IgG1 kappa
<b>Clone</b>	156-4H9
<b>Immunogen</b>	Stimulated human PBL
<b>Formulation</b>	PBS with 0.02% sodium azide
<b>UniprotID</b>	P09326 (Human)
<b>Synonym</b>	CD48 antigen, B-lymphocyte activation marker BLAST-1, BCM1 surface antigen, Leukocyte antigen MEM-102, SLAM family member 2, SLAMF2, Signaling lymphocytic activation molecule 2, TCT.1, CD antigen CD48, CD48, BCM1, BLAST1
<b>Conjugate</b>	Unconjugated
<b>Purification</b>	Affinity chromatography
<b>Storage</b>	2-8°C
<b>Intended use</b>	Research use only
<b>Application</b>	FACS, ICC/IF, IHC
<b>Reactivity</b>	Human

#### Applications

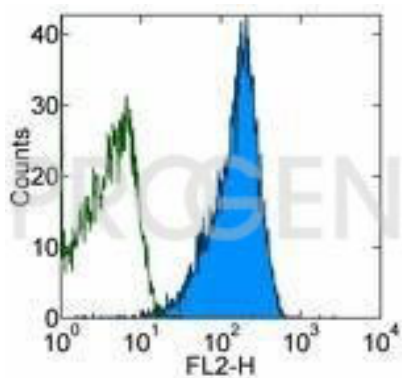
<b>Flow Cytometry (FACS)</b>	0.5-1.0 µg/million cells in 0.1 ml
<b>Immunocytochemistry (ICC)</b>	1:100-1:200 (0.5-1.0 µg/ml)
<b>Immunohistochemistry (IHC) - frozen</b>	1:50-1:100 (1-2 µg/ml)

#### Background

CD48 is a 45 kDa glycosyl phosphatidyl-inositol (GPI)-anchored cell surface protein, highly expressed on lymphocytes and monocytes and weakly on granulocytes. Platelets, fibroblasts, epithelium and endothelium are negative. CD48 has a cellular function in adhesion via its receptor CD2 and a role in gamma/delta T-cell recognition as an accessory molecule and forms one of the markers for detecting the GPI anchoring defect in patients with paroxysmal nocturnal hemoglobinuria (PNH). 156-4H9 was typed in Kobe, Japan at the VIth International Workshop on human leucocyte differentiation antigens.

Positive control: Daudi, JY, Raji, Jurkat, and human lymphocytes. Human lymph node and tonsil.

## Product images



FACS with human peripheral blood lymphocytes (PBL)