

Product datasheet

AAV2 VP1, recombinant protein

Short overview

Cat. No.	640823
Quantity	10 µg
Concentration	100 µg/ml (1.19 µM)

Product description

Formulation	Liquid, 6 M urea in PBS
Source	Escherichia coli
Molecular Weight	84.1 kDa (calculated Mw from aa sequence)
Purity	> 90% (determined by SDS PAGE)
Product description	N-terminal His-tagged (MGSSHHHHHSSGLVPRGSH) recombinant AAV2 capsid protein VP1
UniprotID	P03135 (AAV2)
Purification	Ni-NTA chromatography
Storage	-80°C
Intended use	Research use only
Application	Capillary electrophoresis (CE), Dot blot, SDS PAGE, WB

Applications

Capillary electrophoresis (CE)	Assay dependent
Dot Blot	100 ng, depending on primary antibody and detection method
SDS PAGE	1 µg
Western Blot (WB)	5-20 ng, depending on primary antibody and detection method

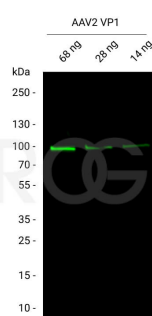
Background

The AAV capsid consists of three capsid proteins, i.e. VP1, VP2 and VP3, which differ in their N-terminus and encapsulate the genomic ssDNA. In native virus particles, the three proteins form subunits with a ratio of 1:1:10 (VP1:VP2:VP3), in a total number of 60 subunits per capsid. The recombinant AAV2 VP1 protein in combination with recombinant AAV2 VP2 (Cat. No. 640824) and recombinant AAV2 VP3 (Cat. No. 640825) can be used to create a mixture with the precise molar ratio of 1:1:10 to compare the protein composition of the viral capsid in your sample by protein detection methods, e.g. western blot. All three recombinant AAV2 capsid proteins are available as set (Cat. No. 72001) or as individual proteins (Cat. No. 640823, 640824, 640825). Note: please find an example how to prepare western blot samples in the pipetting scheme below. Aliquots of the remaining samples can be stored at -80°C for reuse.

Product images

13.5 ng VP1 11 ng VP2 100 ng VP3		Pre-dilution 1:10		Mix 1:1:10 ratio			
kDa 250 - 130 - 100 - 70 - 55 - 35 - 15 -		H ₂ O	VP1	VP2	H ₂ O	1.54 µl	
			4 µl	4 µl	2x Sample buffer	5 µl	
		2x Sample buffer	5 µl	5 µl	VP1 [pre-diluted]	1.35 µl	
		Protein [undiluted]	1 µl	1 µl	VP2 [pre-diluted]	1.11 µl	
					VP3 [undiluted]	1 µl	
		H ₂ O		5.7 µl	5.7 µl	H ₂ O	3.21 µl
		3x Sample buffer	3.3 µl	3.3 µl	3x Sample buffer	3.33 µl	
		VP1 [undiluted]	1 µl	1 µl	VP1 [pre-diluted]	1.35 µl	
					VP2 [pre-diluted]	1.11 µl	
					VP3 [undiluted]	1 µl	

Pipetting scheme for western blot analysis using a mix of the AAV2 capsid proteins (Cat. No. 640823, 640824, 640825). To create a VP mixture with the molar ratio 1:1:10 (VP1:VP2:VP3), please pre-dilute VP1 and VP2 1:10 to yield a final concentration of 10 µg/ml (green table). Pipette the pre-diluted VP1 and VP2 proteins and mix them with the undiluted VP3 protein in your sample buffer and water (blue table). The example with 2x and 3x sample buffer and the required volumes are indicated in the pipetting scheme. Thus, in one lane, 10 µl of the VP mix can be loaded onto the SDS PAGE and analyzed by Western blot using the B1 antibody (Cat. No. 690058, Cat. No. 61058-488, Cat. No. 61058-647). Undiluted = 100 µg/ml, pre-diluted = 10 µg/ml



Western blot analysis of recombinant AAV2 VP1 protein (Cat. No. 640823) with fluorescent B1 antibody (Cat. No. 61058-488). Western blot analysis was performed on different amounts of recombinant AAV2 VP1 ranging from 14 ng to 68 ng. The PVDF membrane was blocked with 5% dry milk in PBST (PBS + 0.1% Tween 20) for 1 h at RT. The primary antibody anti-AAV VP1/VP2/VP3 mouse monoclonal, B1, AFDye 488 Conjugate (Cat. No. 61058-488) was diluted in blocking buffer (antibody concentration 0.13 µg/ml) and incubated for 1 h at RT. The bands were visualized by fluorescent detection.



AAV2 VP1, recombinant protein