

Product datasheet

anti-hCG Holo mouse monoclonal, HCGh25, purified

Short overview

Cat. No.	691694
Quantity	1 ml (100 µg/ml)
Concentration	100 µg/ml

Product description

Host	Mouse
Antibody Type	Monoclonal
Isotype	IgG1 kappa
Clone	HCGh25
Immunogen	Purified hCG
Formulation	PBS with 0.02% sodium azide
Conjugate	Unconjugated
Purification	Affinity chromatography
Storage	2-8°C
Intended use	Research use only
Application	IHC
Reactivity	Human

Applications

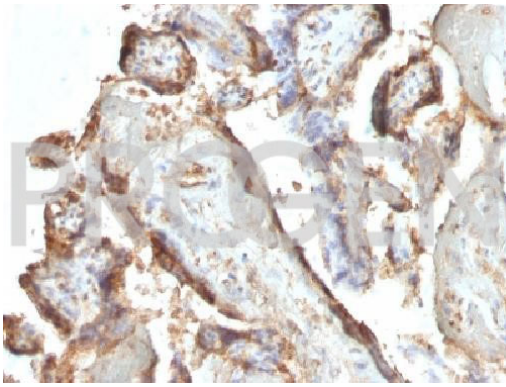
Immunohistochemistry (IHC) - frozen	1:50-1:100 (1-2 µg/ml)
Immunohistochemistry (IHC) - paraffin	1:50-1:100 (1-2 µg/ml; microwave treatment in 10 mM citrate buffer pH 6.0 recommended)

Background

HCGh25 is very special because it reacts ONLY with intact-hCG and not with either free alpha- or free beta-chain of hCG. hCG is a glycoprotein composed of two non-identical, non-covalently linked polypeptide chains. The alpha subunit is identical among hCG, TSH, FSH and LH. While hCG is secreted in large quantities by normal trophoblasts, it is present only in trace amounts in non-pregnant urine and sera but rises sharply during pregnancy. Besides trophoblastic tumors e.g. choriocarcinoma, large cell carcinoma, adenocarcinoma and squamous cell carcinoma of the lung are also positive in 90%, 60% and 20% of cases respectively. hCG expression by non-trophoblastic tumors may indicate aggressive behavior.

Positive control: JAR or TT Cells. Placenta.

Product images



Human placenta