

## Product datasheet

### anti-MLH1 mouse monoclonal, IHC409, purified

#### Short overview

<b>Cat. No.</b>	691743
<b>Quantity</b>	1 ml

#### Product description

<b>Host</b>	Mouse
<b>Antibody Type</b>	Monoclonal
<b>Isotype</b>	IgG2a
<b>Clone</b>	IHC409
<b>Immunogen</b>	Recombinant Human MLH1
<b>Formulation</b>	Tris pH 7.3-7.7 with 1% BSA and 0.09% sodium azide
<b>UniprotID</b>	P40692 (Human)
<b>Synonym</b>	DNA mismatch repair protein Mlh1, MutL protein homolog 1, MLH1, COCA2
<b>Conjugate</b>	Unconjugated
<b>Purification</b>	Affinity chromatography
<b>Storage</b>	2-8°C
<b>Intended use</b>	Research use only
<b>Application</b>	IHC
<b>Reactivity</b>	Human

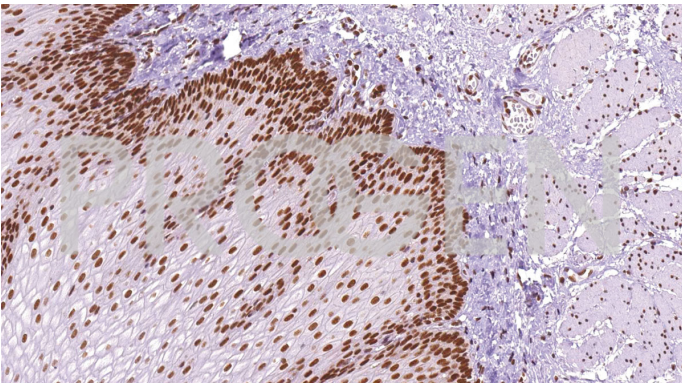
#### Applications

<b>Immunohistochemistry (IHC) - paraffin</b>	1:50-1:200 (microwave treatment recommended)
--	--

#### Background

MutL Homolog 1 (MLH1) is a protein involved in the mismatch-repair pathway. This protein is commonly associated with hereditary non-polyposis colorectal cancer, as the MLH1 gene is frequently mutated in patients with this cancer. Studies have shown MLH1 to be deficient in a high percentage of patients with microsatellite instability, as well as endometrial and ovarian cancers. Use of Anti-MLH1 is optimized when paired in an IHC panel with MSH6, MSH2, and PMS2. Anti-MLH1 is useful in the detection of MLH1 in a number of normal and neoplastic tissues, and for identifying a loss of MLH1 in tumours that are microsatellite-unstable.

#### Product images



Esophagus