

## Product datasheet

### anti-Keratin K27 guinea pig polyclonal, serum

#### Short overview

<b>Cat. No.</b>	GP-K27
<b>Quantity</b>	100 µl

#### Product description

<b>Host</b>	Guinea pig
<b>Antibody Type</b>	Polyclonal
<b>Immunogen</b>	Synthetic peptide of human keratin K27 (formerly also designated keratin K25irs3); aa 404-416 (GYG GPG NQT KDS S-C), coupled to KLH
<b>Formulation</b>	Contains 0.09% sodium azide and 0.5% BSA
<b>UniprotID</b>	Q7Z3Y8 (Human)
<b>Synonym</b>	Keratin, type I cytoskeletal 27, Cytokeratin-27, CK-27, Keratin-25C, K25C, Keratin-27, K27, Type I inner root sheath-specific keratin-K25irs3, KRT27, KRT25C
<b>Note</b>	Centrifuge prior to opening
<b>Conjugate</b>	Unconjugated
<b>Purification</b>	Stabilized antiserum
<b>Storage</b>	Short term at 2-8°C; long term storage in aliquots at -20°C; avoid freeze/thaw cycles
<b>Intended use</b>	Research use only
<b>Application</b>	IHC
<b>Reactivity</b>	Human
<b>No reactivity</b>	Mouse

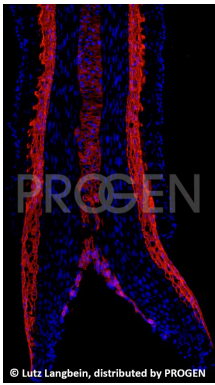
#### Applications

<b>Immunohistochemistry (IHC) - frozen</b>	1:100-1:200
<b>Immunohistochemistry (IHC) - paraffin</b>	1:100-1:200 (microwave treatment recommended)

#### Background

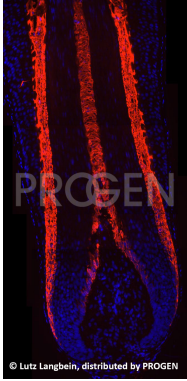
Reactive polypeptide (specificity): specific for human irs-specific keratin K27. The antiserum stains specifically the Henle, Huxley and cuticle layer of the inner root sheath (irs) of the hair follicle. Negative on all other epithelia tested.

#### Product images



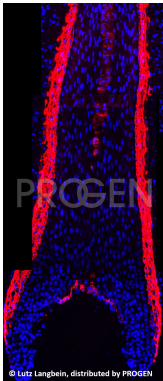
© Lutz Langbein, distributed by PROGEN

Human beard hair (courtesy of L. Langbein)



© Lutz Langbein, distributed by PROGEN

Human beard hair (courtesy of L. Langbein)



© Lutz Langbein, distributed by PROGEN

Human beard hair (courtesy of L. Langbein)

## References

Publication	Species	Application
<a href="#">Langbein, L., Yoshida, H., Praetzel-Wunder, S., Parry, D. A. &amp; Schweizer, J. The Keratins of the Human Beard Hair Medulla: The Riddle in the Middle. J. Invest. Dermatol. 130, 55â€“73 (2010).</a>	human	IHC (frozen)