

Product datasheet

anti-Napsin A mouse monoclonal, IHC635, purified

Short overview

Cat. No.	691730
Quantity	1 ml

Product description

Host	Mouse
Antibody Type	Monoclonal
Isotype	IgG1
Clone	IHC635
Immunogen	Recombinant Human Napsin A
Formulation	Tris pH 7.3-7.7 with 1% BSA and 0.09% sodium azide
UniprotID	O96009 (Human)
Synonym	Napsin-A, EC 3.4.23.-, Aspartyl protease 4, ASP4, Asp 4, Napsin-1, TA01/TA02, NAPSA, NAP1, NAPA
Conjugate	Unconjugated
Purification	Affinity chromatography
Storage	2-8°C
Intended use	Research use only
Application	IHC
Reactivity	Human

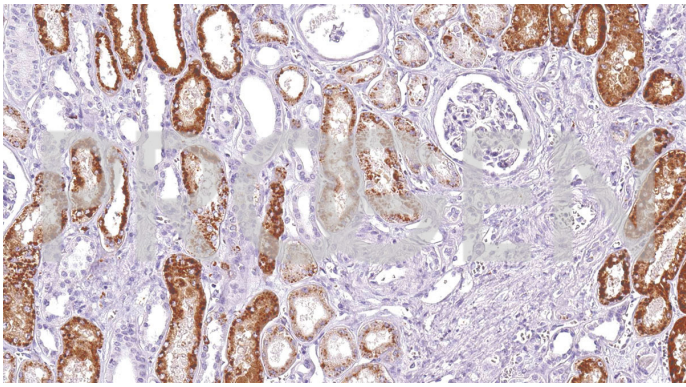
Applications

Immunohistochemistry (IHC) - paraffin	1:50-1:200 (microwave treatment recommended)
--	--

Background

Napsin A is a pepsin-like aspartic proteinase that is closely related to Napsin B. It is expressed mainly in the lung and kidney, and is involved in the correct folding, targeting, and control of aspartic proteinase zymogens. Napsin A expression has been indicated in type II pneumocytes and adenocarcinomas of the lung and kidney. Anti-Napsin A is also useful for differentiating between primary lung adenocarcinomas and adenocarcinomas of other organs, due to the high expression of Napsin A in adenocarcinomas of the lung.

Product images



Kidney