

Product datasheet

anti-Keratin K25 guinea pig polyclonal, serum

Short overview

Cat. No.	GP-K25
Quantity	100 µl

Product description

Host	Guinea pig
Antibody Type	Polyclonal
Immunogen	Synthetic peptide of human keratin K25 (formerly also designated keratin K25irs1); aa 13-26 (C-PRPTTGSLRLYGG), coupled to KLH
Formulation	Contains 0.09% sodium azide and 0.5% BSA
UniprotID	Q7Z3Z0 (Human)
Synonym	Keratin, type I cytoskeletal 25, Cytokeratin-25, CK-25, Keratin-25, K25, Keratin-25A, K25A, Type I inner root sheath-specific keratin-K25irs1, KRT25, KRT25A
Note	Centrifuge prior to opening
Conjugate	Unconjugated
Purification	Stabilized antiserum
Storage	Short term at 2-8°C; long term storage in aliquots at -20°C; avoid freeze/thaw cycles
Intended use	Research use only
Application	IHC, WB
Reactivity	Human

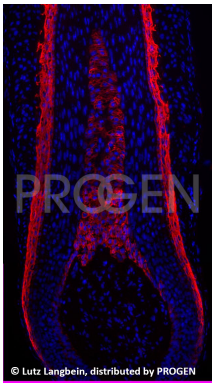
Applications

Immunohistochemistry (IHC) - frozen	1:100-1:200
Western Blot (WB)	1:2,000

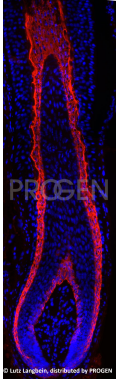
Background

Guinea pig polyclonal anti-Keratin K25 (K25irs1) antibody. Specific for human irs-specific keratin K25. The antiserum stains specifically the Henle, Huxley and cuticle layer of the inner root sheath (irs) of the hair follicle. Negative on all other epithelia tested.

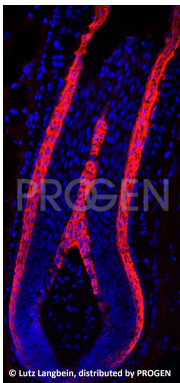
Product images



Human beard hair (courtesy of L. Langbein)



Human scalp hair (courtesy of L. Langbein)



Human scalp hair (courtesy of L. Langbein)

References

Publication	Species	Application
Langbein, L., Yoshida, H., Praetzel-Wunder, S., Parry, D. A. & Schweizer, J. The Keratins of the Human Beard Hair Medulla: The Riddle in the Middle. J. Invest. Dermatol. 130, 55â€“73 (2010).	human	IHC (frozen)