

Product datasheet

anti-Complement C3b alpha mouse monoclonal, H206, lyophilized, purified

Short overview

Cat. No.	61019
Quantity	50 µg
Concentration	50 µg/ml after reconstitution with 1 ml dist. water

Product description

Host	Mouse
Antibody Type	Monoclonal
Isotype	IgG1
Clone	H206
Immunogen	Human complement component C3
Formulation	Lyophilized; reconstitute in 1 ml dist. water (final solution contains 0.09% sodium azide, 0.5% BSA in PBS buffer, pH 7.4)
Conjugate	Unconjugated
Purification	Affinity chromatography
Storage before reconstitution	2-8°C until indicated expiry date
Storage after reconstitution	Up to 3 months at 2-8°C; long term storage in aliquots at -20°C; avoid freeze/thaw cycles
Intended use	Research use only
Application	ELISA, IHC, WB
Reactivity	Human

Applications

ELISA	Assay dependent
Immunohistochemistry (IHC) - frozen	1:10
Western Blot (WB)	Assay dependent

Background

H 206 allows demonstration of C3 deposits in tissue, on cells, on microorganisms and in immune complexes. It does not react with C3a or C3d and does not inhibit hemolytic function of C3. The epitope was located on the C-terminus of the alpha-chain (39.5 kD fragment of C3c).

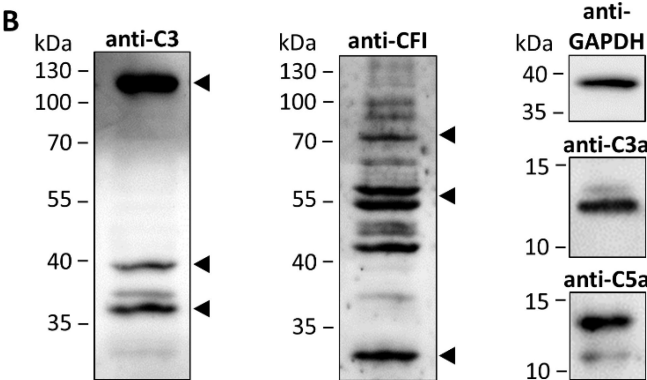
Disorders specifically detected: Detection of C3b deposits in tissue, on cells, on microorganisms and in immune complexes. It should be used with positive control anti C3b-β, (H11; Cat. No. 61020) and negative control anti-C3a (H13; Cat. No. 61018). Activated, deposited C3b bears C3b-a and C3b-β, but no longer C3a. Ubiquitous or nonspecifically absorbed C3 is still C3a positive with H13.

Polypeptide reacting: C3b alpha-chain.

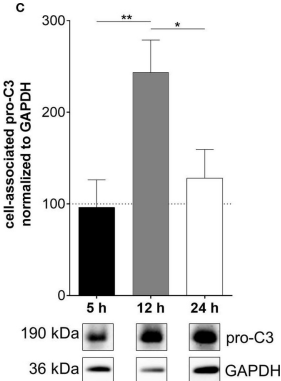
Product images



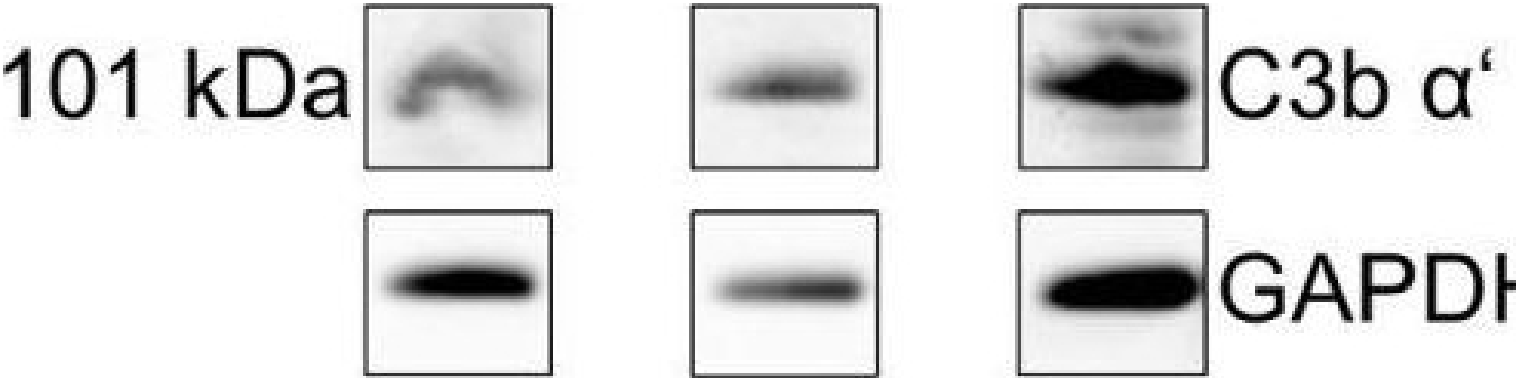
anti-Complement C3b alpha mouse monoclonal, H206, lyophilized, purified



[SchÄxfer, N., Wolf, H. N., et al. Properdin Modulates Complement Component Production in Stressed Human Primary Retinal Pigment Epithelium Cells. Antioxidants \(Basel\). 2020-08-26.](#) Species/Reactant: Homo sapiens (Human)Applications: Western BlottingImage collected and cropped by CiteAb from the following publication, provided under a CC-BY licence.



[SchÄxfer, N., Rasras, A., et al. Complement Factor H-Related 3 Enhanced Inflammation and Complement Activation in Human RPE Cells. Front Immunol. 2021-11-26.](#) Species/Reactant: Homo sapiens (Human)Applications: Western BlottingImage collected and cropped by CiteAb from the following publication, provided under a CC-BY licence.



[SchÄxfer, N., Rasras, A., et al. Complement Factor H-Related 3 Enhanced Inflammation and Complement Activation in Human RPE Cells. Front Immunol. 2021-11-26.](#) Species/Reactant: Homo sapiens (Human)Applications: Western BlottingImage collected and cropped by CiteAb from the PROGEN Biotechnik GmbH | Maaßstraße 30 | D-69123 Heidelberg

following publication, provided under a CC-BY licence.

References

Publication	Species	Application
SchÄpf, N. et al. Properdin Modulates Complement Component Production in Stressed Human Primary Retinal Pigment Epithelium Cells. Antioxidants 9, 793 (2020).	human	WB