

Product datasheet

anti-Myeloid Specific Antigen mouse monoclonal, BM-2, purified

Short overview

Cat. No.	691535
Quantity	1 ml (100 µg/ml)
Concentration	100 µg/ml

Product description

Host	Mouse
Antibody Type	Monoclonal
Isotype	IgG1
Clone	BM-2
Immunogen	Nuclei from pokeweed mitogen stimulated human peripheral blood lymphocytes
Formulation	PBS with 0.02% sodium azide
Conjugate	Unconjugated
Purification	Affinity chromatography
Storage	2-8°C
Intended use	Research use only
Application	FACS, IHC
Reactivity	Human, Monkey

Applications

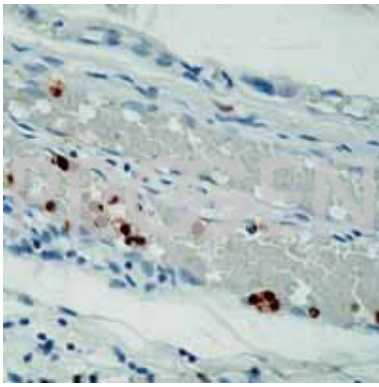
Flow Cytometry (FACS)	0.5-1.0 µg/million cells in 0.1 ml
Immunohistochemistry (IHC) - frozen	1:50-1:100 (1-2 µg/ml)
Immunohistochemistry (IHC) - paraffin	1:50-1:100 (1-2 µg/ml; microwave treatment in 10 mM citrate buffer pH 6.0 recommended)

Background

Until recently, immunological markers for myeloid cells have been lacking, especially those which identify different levels of cellular differentiation. The BM series provides a new panel of monoclonal antibodies which stain early precursor and mature forms of human myeloid cells. This panel of monoclonal antibodies reacts with antigenic determinants present in normal myeloid cells and leukemias of similar derivation. BM-2 recognizes a cytoplasmic antigen expressed in mature human granulocytes (polys) residing in lymphoid and non-lymphoid tissues. It does not react with any other cell type in human tissues.

Positive control: tonsil.

Product images



Human tonsil