

Product datasheet

anti-LDL Receptor rabbit polyclonal, purified

Short overview

Cat. No.	61099
Quantity	250 µl (100 µg/ml)
Concentration	100 µg/ml

Product description

Host	Rabbit
Antibody Type	Polyclonal
Isotype	IgG
Immunogen	Specific synthetic peptide (sequence not conserved in VLDL receptor and LRP) of the human LDL receptor extracellular domain (epitope between residues nos. 184-195, the linker region between repeats 4 and 5)
Formulation	PBS with 0.5% BSA
Note	Centrifuge prior to opening
Conjugate	Unconjugated
Purification	Affinity chromatography
Storage	Short term at 2-8°C; long term storage in aliquots at -20°C; avoid freeze/thaw cycles
Intended use	Research use only
Application	IHC, Receptor binding assay, WB
Reactivity	Bovine, Human, Mouse, Rat

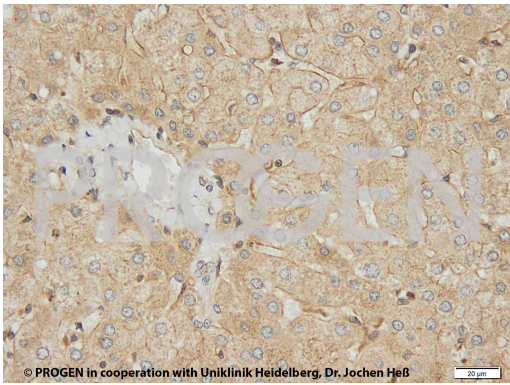
Applications

Immunohistochemistry (IHC) - frozen	1:20-1:50
Immunohistochemistry (IHC) - paraffin	1:20-1:50 (microwave treatment recommended)
Receptor Binding Assays	Assay dependent
Western Blot (WB)	1:100-1:200

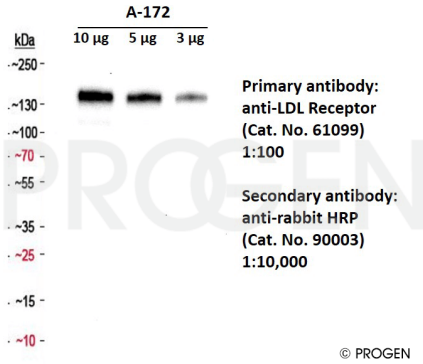
Background

The LDL receptor (160 kDa mature or glycosylated receptor; 120 kDa precursor or unglycosylated receptor) plays a key role in cellular cholesterol homeostasis. The antibody to LDLR reacts specifically with human LDLR and is suitable for use in flow cytometry and immunoblotting. The antibody does not inhibit binding of LDL. In immunoblotting, the antibody recognizes the 160 kDa band of LDLR and a 120 kDa band of the LDLR precursor from fibroblasts, hepatocytes, and monocytic cells cultured in the presence of lipoprotein-deficient serum.

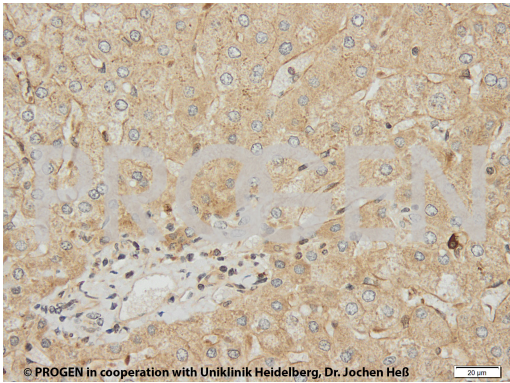
Product images



Human liver (courtesy of J.Heß, University Hospital Heidelberg)



WB with anti-LDL Receptor antibody (Cat. No. 61099, 1:100), A-172 whole cell lysate (3-10 μg)



Human liver (courtesy of J.Heß, University Hospital Heidelberg)

References

Publication	Species	Application
Galicia-Garcia, U. et al. Mutation type classification and pathogenicity assignment of sixteen missense variants located in the EGF-precursor homology domain of the LDLR. Sci. Rep. 10, 1727 (2020).	hamster	WB
Benito-Vicente, A. et al. p.(Asp47Asn) and p.(Thr62Met): non deleterious LDL receptor missense variants functionally characterized in vitro. Sci.Rep. 8, 16614 (2018)	hamster	WB
Jiang, L. et al. The use of targeted exome sequencing in genetic diagnosis of young patients with severe hypercholesterolemia. Sci. Rep. 6, 1â€9 (2016).	human	WB
Cosset, F. L., et al., Infection of Human Liver Myofibroblasts by Hepatitis C Virus: A Direct Mechanism of Liver Fibrosis in Hepatitis C., PLoS One 10, e0134141, (2015)	human	IF
Sorensen, S., Ranheim, T., Bakken, K. S., Leren, T. P. & Kulseth, M. A. Retention of Mutant Low Density Lipoprotein Receptor in Endoplasmic Reticulum (ER) Leads to ER Stress. J. Biol. Chem. 281, 468-476 (2006).	human	WB,IP