

Product datasheet

anti-CRASH mouse monoclonal, 7B6, purified

Short overview

Cat. No.	691516
Quantity	1 ml (100 µg/ml)
Concentration	100 µg/ml

Product description

Host	Mouse
Antibody Type	Monoclonal
Isotype	IgG1 kappa
Clone	7B6
Immunogen	With CRASH recombinant protein and synthetic peptide
Formulation	PBS with 0.02% sodium azide
UniprotID	Q7L266 (Human)
Synonym	Isoaspartyl peptidase/L-asparaginase, EC 3.4.19.5, EC 3.5.1.1, Asparaginase-like protein 1, Beta-aspartyl-peptidase, Isoaspartyl dipeptidase, L-asparagine amidohydrolase [Cleaved into: Isoaspartyl peptidase/L-asparaginase alpha chain; Isoaspartyl peptidase/L-asparaginase beta chain], ASRGL1, ALP, CRASH
Conjugate	Unconjugated
Purification	Affinity chromatography
Storage	2-8°C
Intended use	Research use only
Application	ELISA, IHC, WB
Reactivity	Human

Applications

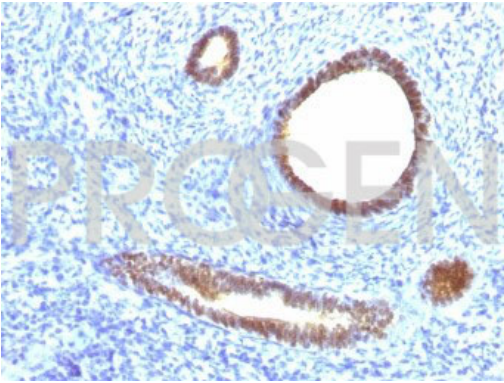
ELISA	Assay dependent
Immunohistochemistry (IHC) - frozen	1:50-1:100 (1-2 µg/ml)
Immunohistochemistry (IHC) - paraffin	1:50-1:100 (1-2 µg/ml; microwave treatment in 10 mM citrate buffer pH 6.0 recommended)
Western Blot (WB)	1:50-1:100 (1-2 µg/ml)

Background

7B6 reacts with CRASH, a 308 AA glycoprotein sharing 32% homology with human asparaginase and identical to Asparaginase-Like Protein (ALP) found in rat sperm. CRASH is found in a variety of tumors, but only occasionally in normal tissues. Especially ovarian cancers are highly positive. CRASH is further found in brain tumors, some colonic cancers, some lung cancers, some prostate cancers, uterine cancers, some breast cancers and some thyroid cancers. It was not found in serum. In Western blot three bands are demonstrated of 45 kDa, 28 kDa and 15 kDa.

Positive control: ovarian cancer, KM22 breast cancer cells.

Product images



Human uterus