

## Product datasheet

### anti-HPV-16 E6 mouse monoclonal, HPV-13E2, purified

#### Short overview

<b>Cat. No.</b>	691696
<b>Quantity</b>	1 ml (100 µg/ml)
<b>Concentration</b>	100 µg/ml

#### Product description

<b>Host</b>	Mouse
<b>Antibody Type</b>	Monoclonal
<b>Isotype</b>	IgG1 kappa
<b>Clone</b>	HPV-13E2
<b>Immunogen</b>	HPV-16 E6 synthetic peptide
<b>Formulation</b>	PBS with 0.02% sodium azide
<b>Conjugate</b>	Unconjugated
<b>Purification</b>	Affinity chromatography
<b>Storage</b>	2-8°C
<b>Intended use</b>	Research use only
<b>Application</b>	ELISA, IHC
<b>Reactivity</b>	Human

#### Applications

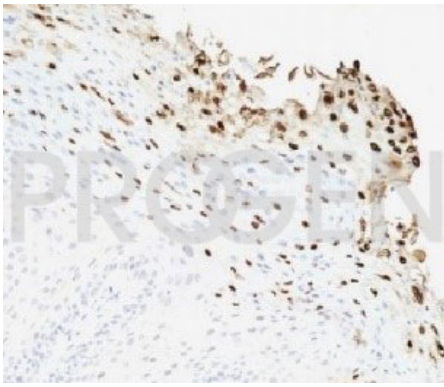
<b>ELISA</b>	1:1-1:100,000 (0.001-100 µg/ml)
<b>Immunohistochemistry (IHC) - frozen</b>	1:50-1:100 (1-2 µg/ml)

#### Background

Monoclonal antibody HPV-13E2 reacts with HPV-16 E6 peptide (MHQKRTAMFQDPPQERPRKLPQLC). Infection with specific types of HPV has been associated with an increased risk of developing cervical neoplasia. HPV types 6 and 11 have been associated with relatively benign diseases such as genital warts but types 16 and 18 are strongly associated with cervical, vaginal, and vulvar malignancies.

Positive control: HPV-16 E6 synthetic peptide or recombinant protein.

#### Product images



Human cervix