

## Product datasheet

anti-PLAP (Placental alkaline phosphatase) mouse monoclonal, F5C2 (C2), purified

### Short overview

<b>Cat. No.</b>	691686
<b>Quantity</b>	1 ml (100 µg/ml)
<b>Concentration</b>	100 µg/ml

### Product description

<b>Host</b>	Mouse
<b>Antibody Type</b>	Monoclonal
<b>Isotype</b>	IgG1
<b>Clone</b>	F5C2 (C2)
<b>Immunogen</b>	PLAP, purified from FS phenotype human placenta
<b>Formulation</b>	PBS with 0.02% sodium azide
<b>UniprotID</b>	P05187 (Human)
<b>Synonym</b>	Alkaline phosphatase, placental type, EC 3.1.3.1, Alkaline phosphatase Regan isozyme, Placental alkaline phosphatase 1, PLAP-1, ALPP, PLAP
<b>Conjugate</b>	Unconjugated
<b>Purification</b>	Affinity chromatography
<b>Storage</b>	2-8°C
<b>Intended use</b>	Research use only
<b>Application</b>	ELISA, FACS, IHC, IP, WB
<b>Reactivity</b>	Human

### Applications

<b>ELISA</b>	Assay dependent
<b>Flow Cytometry (FACS)</b>	0.5-1.0 µg/million cells in 0.1 ml
<b>Immunohistochemistry (IHC) - frozen</b>	1:25-1:50 (2-4 µg/ml)
<b>Immunohistochemistry (IHC) - paraffin</b>	1:25-1:50 (2-4 µg/ml; microwave treatment in 10 mM citrate buffer pH 6.0 recommended)
<b>Immunoprecipitation (IP)</b>	Assay dependent
<b>Western Blot (WB)</b>	1:50-1:100 (1-2 µg/ml)

### Background

PLAP is a tissue specific, trophoblast-derived, 58 kDa, glycosyl-phosphatidylinositol (GPI)-anchored, dimeric, Zn<sup>2+</sup> metallated glycoprotein, only found in humans, orangutans and chimpanzees, that catalyzes the hydrolysis of phosphomonoesters into an inorganic phosphate and an alcohol. It is present in the placenta and serum of pregnant women and in high frequency in gynecological and testicular cancers and in lower frequency in other tumors. The three tissue-specific APs in humans, PLAP, germ cell AP (GCAP) and intestinal AP, are 90-98% homologous. Non tissue

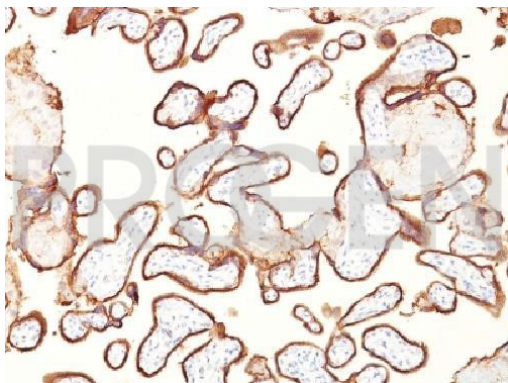
PROGEN Biotechnik GmbH | Maaßstraße 30 | D-69123 Heidelberg

Tel.: +49 (0) 6221 8278-0 | Fax: +49 (0) 6221 8278-24 | Email: [info@progen.com](mailto:info@progen.com) | Web: [www.progen.com](http://www.progen.com)

specific AP is found in kidney, liver and bone. F5C2 binds equally well to all common allelic variants (S,F, FS and I) of PLAP and to some variants of AP from normal human testis, while antibody H7E8 reacts with all variants of AP in normal human testis.

Positive control: Human placenta.

## Product images



Human placenta