

Product datasheet

anti-DOG1 mouse monoclonal, IHC562, purified

Short overview

Cat. No.	691733
Quantity	1 ml

Product description

Host	Mouse
Antibody Type	Monoclonal
Isotype	IgG1
Clone	IHC562
Immunogen	DOG1
Formulation	Tris pH 7.3-7.7 with 1% BSA and 0.09% sodium azide
UniprotID	Q5XXA6 (Human)
Synonym	Anoctamin-1, Discovered on gastrointestinal stromal tumors protein 1, Oral cancer overexpressed protein 2, Transmembrane protein 16A, Tumor-amplified and overexpressed sequence 2, ANO1, DOG1, ORAOV2, TAOS2, TMEM16A
Conjugate	Unconjugated
Purification	Affinity chromatography
Storage	2-8°C
Intended use	Research use only
Application	IHC
Reactivity	Human

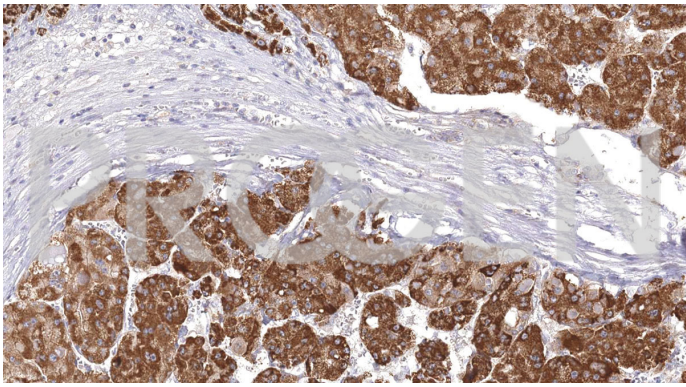
Applications

Immunohistochemistry (IHC) - paraffin	1:50-1:200 (microwave treatment recommended)
--	--

Background

DOG1, also known as Discovered on GIST-1, is a marker that highly specific for gastrointestinal stromal tumor (GIST). Anti-DOG1 is extremely sensitive for the detection of GIST and its diagnosis. Although some GIST stain weakly for c-kit, DOG1 is expressed

Product images



Liver cancer