

## Product datasheet

### protag-HiSec anti-mouse IgG2a/b-X2 Atto 488

#### Short overview

|                 |        |
|-----------------|--------|
| <b>Cat. No.</b> | 80505  |
| <b>Quantity</b> | 500 µl |

#### Product description

|                      |  |
|----------------------|--|
| <b>Host</b>          | Llama/alpaca   |
| <b>Antibody Type</b> | Recombinant, produced in E.coli  |
| <b>Isotype</b>       | Single-domain antibody   |
| <b>Clone</b>         | 14A4   |
| <b>Immunogen</b>     | Mouse IgG2   |
| <b>Formulation</b>   | 5 µM fluorescently labeled single-domain antibody in buffered saline, 50% glycerol, 0.09% sodium azide (10 µM fluorophore) |
| <b>Note</b>          | Centrifuge prior to opening  |
| <b>Conjugate</b>     | Atto 488   |
| <b>Purification</b>  | Affinity chromatography  |
| <b>Storage</b>       | Up to 3 months: -20°C; up to 12 months: -80°C or below; protect from light!  |
| <b>Intended use</b>  | Research use only  |
| <b>Application</b>   | ICC/IF, WB   |
| <b>Reactivity</b>    | Mouse IgG2 and IgG2b   |
| <b>No reactivity</b> | Chicken IgG, Donkey IgG, Goat IgG, Guinea pig IgG, Human IgG, Mouse IgG1 and IgM, Rabbit IgG, Rat IgG                      |

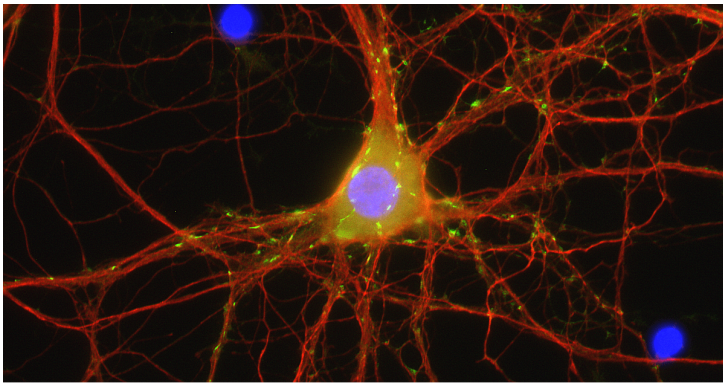
#### Applications

|                                  |       |
|----------------------------------|-------|
| <b>Immunocytochemistry (ICC)</b> | 1:500 |
| <b>Western Blot (WB)</b>         | 1:500 |

#### Background

protag-HiSec anti-mouse IgG2a/b is an isotype- and species-specific camelid single-domain antibody (sdAb) produced by NanoTag Biotechnologies GmbH. It is directed against mouse IgG2a and IgG2b and contains two site-specifically coupled fluorophores per protag molecule. One single-domain antibody targets two fluorophores to a primary mouse antibody. Due to the monovalent binding, there are no primary and secondary antibody clusters formed, leading to better epitope accessibility and a more precise localization. There are no batch-to-batch variations, since the protag-HiSecs single-domain antibodies are recombinantly expressed.

#### Product images



Multiplexing: Indirect immunostaining of PFA fixed mouse hippocampus neurons with an anti-Tau primary antibody detected with protag-HiSec anti-mouse IgG2a/b-X2 Atto 565 (represented in red) and an anti-Synaptoporin primary antibody detected with protag-HiSec anti-mouse IgG2a/b-X2 Atto 488 (Cat. No. 80505, represented in green). Nuclei were visualized by DAPI staining (blue)(courtesy of NanoTag Biotechnologies GmbH).